



INSULATION CAPS FOR VALVES

2024



THE ENERGY SAVING AND ASSEMBLY FRIENDLY INSULATION CAP SYSTEM

Polyurethane (PUR) is a type of plastic with particularly good insulating properties. Both cold and heat insulating, the foam is used in a variety of products and in the construction industry. If the insulating capacity plays a particularly important role, the low lambda value of less than 0.024 W / mK results in large energy savings. As duroplastic (hardened PUR) it can be formed into numerous shapes.

One of our best known products is the insulating cap. It is used for the insulation of venues and district heating installations. In addition, heat-insulating polyurethane is installed as insulating components in window profiles and strips.

Tinby offers a range of insulation caps for almost every manufacturer and fitting. All cutouts are made at the factory so that they can be mounted on site with just one hand. Maintenance work can be carried out easily and quickly in this way. The high quality of the insulating caps reduces the wear of the individual components even with frequent changes.

A uniform overall picture of the system insulation is provided by various surfaces: All insulating caps are available in polystyrene (PS) or aluminum coarse grain sheet, deepdrawn (AL).

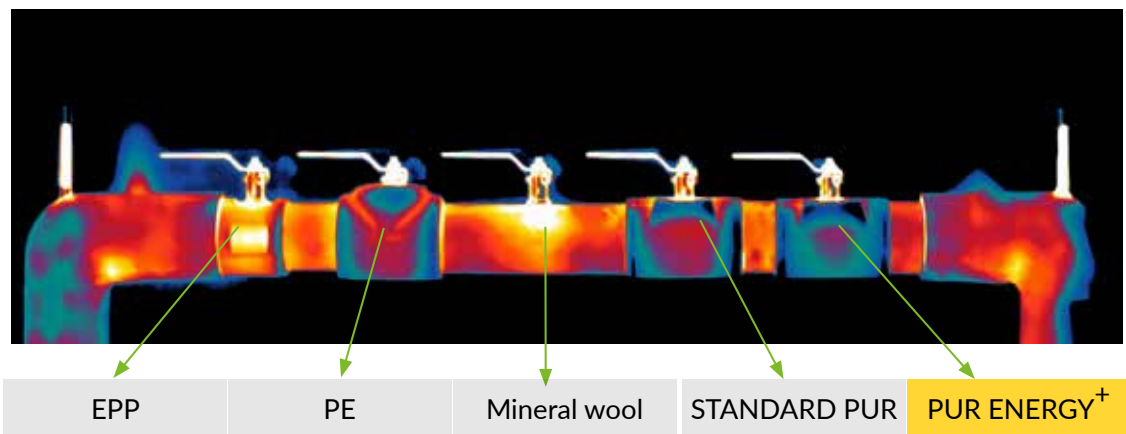


TABLE OF CONTENTS

Energy saving and assembly friendly insulation cap systems	2
Insulation capacity and energy loss.....	4
TOPO Energy Box ALU.....	6
TOPO Energy Box ps.....	7
TOPO DHS for district heating valves.....	8
Type overview with socket connection.....	10
Type overview with flange connection.....	11
Valve overview.....	12
Valve overview.....	13
Serie SVM.....	15
Serie SVK.....	16
Serie OMG.....	17
Serie USV.....	18
Serie UKM.....	18
Serie HCM.....	19
Serie HSG.....	20
Serie KHM.....	21
Serie PKH.....	22
Serie GVM.....	23
Serie DWM.....	24
Serie SFM.....	25
Serie BSC.....	26
Serie FPA.....	27
Serie DWV.....	28
Serie FKL.....	29
Serie FVK.....	30
Serie FVL.....	31
Serie SVF.....	32
Serie DHS AK.....	33
Serie DHS MS.....	33
Serie DHS B.....	34
Serie DHS R.....	34
Serie DHS DM.....	35
ENERGY BOX DHS F.....	35
Serie DHS FL.....	36
Serie DHS KH.....	36
Serie MS.....	37
Serie ME.....	37
Serie FK.....	38
Serie K.....	38
Serie T.....	39
Serie OM.....	39
Other insulation solutions.....	40
Pricelist TOPO DHS.....	42
Pricelist TOPO ENERGY BOX.....	43
Pricelist TOPO ENERGY BOX, ALU.....	44
Pricelist TOPO ENERGY BOX, PS.....	44
Contact information.....	46
Technical support.....	46
Terms of services.....	47
Tinby A/S - part of SP Group.....	48

INSULATION & ENERGY LOSS

- HIGH INSULATION
- ENERGY SAVING
- EASY TO ASSEMBLE AND REUSE
- PRODUCED BY TINBY



INSULATION CAPS

PRODUCED BY TINBY

To meet the global environmental challenges, reducing energy loss and thereby improve insulation new and preexisting buildings is necessary. Tinby produces and delivers insulation caps made from polyurethan (PUR) for the construction industry. They reduce the energy loss of buildings, can be reused with a simply change of valve and retains its high ability to insulate even small wall thickness. PUR-Insulation is a part of improving the energy efficiency of buildings and reducing the emission of CO₂.

In 2020 the European Union has passed regulation for buildings during both for new building and changes made to preexisting construction, which means that the loss of energy will be reduced by 30%. This reduction can be attained by better and smarter insulation in buildings.

HIGH INSULATION ABILITIES W/ A LOW FOAM THICKNESS

To achieve the high demands for insulation, you either need to use a thicker layer of insulation, which often wont be able to fit, or use insulation caps from Tinby. Because of the Lambda value in the caps the thickness of the foam is not increased. For that reason, they can be used with in smaller spaces. Both in the case of newer buildings and during renovations of existing buildings, the cap can be split with a simple tool and adapted on the spot.

Long term there is a large amount of the energy saved, because of the longevity of the material and the high performance throughout the building's lifetime.

REUSABLE

The insulation caps are easy to assemble on newer as well as preexisting installations and are developed to make the valves changeable without damaging the surrounding

FACTS ON TINBYS INSULATION CAPS

- λ -value: 0,24 W/m°C
- Can handle most acids and is not attacked by rot, fungus or mildew.
- Fire Class B2 according to DIN 4102
- In the future the insulation caps from Tinby will be coated with polytyrol (PS). It is more sustainable when disposing.
- Pay-back period: 2 years (replacement of mineral wool, EPP or micro-cellular rubber: : 5 år)
- Tinby also offers pipe sections in PUR-foam without a shell. It is a beneficial insulation solution both economically and in safety that is also used against condensation.

insulation. The caps can handle most acids, is not attached by rot, fungus or mildew, does not attract moisture and as opposed to mineral wool is not heat conductive. Therefore, the insulation caps from Tinby can be reused.

PAY-BACK PERIOD

If you insulate used Tinbys polyurethan-foam you get a pay-back time of less than 2 years for newer buildings. If you replace the mineral wool, EPP or micro-cellular rubber the pay-back time is less than 5 years.

We have the material, technical knowhow and the production facilities.

TOPO ENERGY BOX ALU

Insulation corresponding to EnEV consisting of two molded foam half shells with sheathing made of aluminum coarse grain sheet metal, which are fixed with guide elements (tongue and groove system) and clamping straps. The surface of the Energy Box in ALU design is diffusion-tight. It can therefore also be used for the cold water area. At media temperatures below 12 ° C, all joints and joints must be protected against condensation by being carefully taped with aluminum adhesive tape; eventually it may additionally be sealed with silicone.



PUR-foam
 Lambda = 0,024
 Fire class B 2

Tensioning bands /
 tension springs
 made of corrosionresistant
 material

Insulation

Material:	PUR-Foam
Insulation capability:	0,024 W/m*K
Weight:	60 kg/m ³ +/- 5
Temperature for insulation:	max. +130° C
Fire class accordingly: DIN 4102:	B2, normal inflammable (highest possible classification for PUR foam!)

Shell

Material:	Aluminium foil (AL)
Color:	metal color, Aluminium
Fire class accordingly: DIN 4102:	A, not flammable

CONNECTION TECHNOLOGY

Tongue and groove system and outside clamping tongue / bands made of corrosion-resistant material

TOPO ENERGY BOX PS

The EnEV-compliant insulation consisting of two molded foam PUR half shells with PS sheath, which are fixed with guide elements (tongue and groove system) and straps. At media temperatures below 12 ° C, all joints and joints must be protected against condensation by being carefully sealed with silicone.



PUR-foam
Lambda = 0,024
Fire class B 2

Tensioning bands /
tension springs
made of corrosion-resistant
material

Insulation

Material:	PUR-Foam
Insulation capability:	0,024 W/m*K
Weight:	60 kg/m ³ +/- 5
Temperature for insulation:	max. +130° C
Fire class accordingly: DIN 4102:	B2, normal inflammable (highest possible classification for PUR foam!)

Shell

Material:	Polystyrene (PS)
Color:	Grey (RAL 7035)
Fire class accordingly: DIN 4102:	B1, svært antændeligt

CONNECTION TECHNOLOGY

Tongue and groove system and outside clamping tongue / bands made of corrosion-resistant material

TOPO DHS INSULATION CAPS FOR DISTRICT HEATING SYSTEMS

Insulation corresponding to EnEV consisting of two molded foam half-shells which are fixed with guide elements (tongue and groove system) and clamping straps. At media temperatures below 12 ° C, all joints and joints must be protected against condensation by being carefully sealed with silicone.



PUR-foam
 Lambda = 0,024
 Fire class B 2

Tensioning bands /
 tension springs
 made of corrosionresistant
 material

MATERIAL	
Material:	PUR-Foam
Insulation capability:	0,024 W/m*K
Weight:	60 kg/m ³ +/- 5
Temperature for insulation:	max. +130° C
Fire class accordingly: DIN 4102:	B2, normal inflammable (highest possible classification for PUR foam!)

INSULATION SHELL	
Material:	-
Color:	-
Fire class accordingly DIN 4102:	-

THE SOLUTION IS A TOPO ENERGY BOX INSULATION CAP

A TOPO Energy Box insulation cap is a insulation unit, which can easily be assembled, disassembled and reused without the need for tools. TOPO Energy Box insulation caps effectively solves a variety of insulation tasks for valves. Polyurethan has a practical lambda value of less than 0,028 W/m°C. Therefore, a large sum of energy is saved by using insulation caps from Tinby. TOPO insulation caps are tried and approved for fire call B2 after DIN 4102. Referring to Technische Universität Braunschweig, Germany, Report no. 3207/8950-a-Fe/wi.

EASY TO ASSEMBLE

TOPO caps are made to easily adapt with a saw or knife. The adaptation is necessary for many older installations, where the distance between pipe and wall is not prepared for insulation.

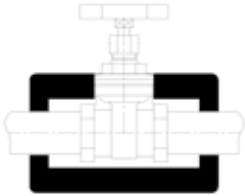
TOPO caps are a standard program that fits most valves. If there is a need for an insulation cap that is not found in our standard program, Tinby can execute to job from idea to finished product.

- High insulation capacity with a low wall thickness.
- Easy to assemble and disassemble on both new and pre existing installations.
- Can be reused.
- Can be assembled to make the insulation diffusion tight (the installation is protected against condensation and corrosion).
- Can be used in narrow spaces, because of the ability to split and adapt the cap using few tools.
- They are developed to make sure valves can be changed without damaging the surrounding insulation.
- Fire Class B2 according to DIN 4102.
- Can handle most acids and is not attacked by rot, fungus or mildew.
- Does not draw moisture and as opposed to mineral wool it is not diathermic.
- The caps are coated with a plastic film on the outside.

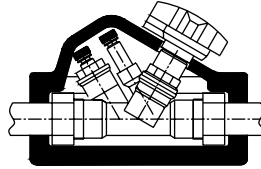


TYPE OVERVIEW WITH SOCKET CONNECTION

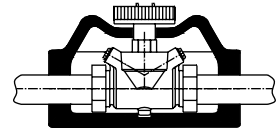
Serie GVM (p. 23)
for gate valves, straight seat valves
and check valves with socket
connection



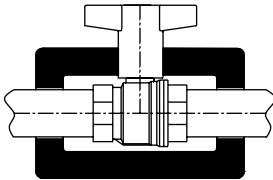
Serie HCM (p. 19)
for TA rotary seat
valves in sleeve design



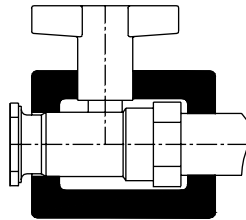
Serie HSG (p. 20)
Kemper Multitherm, Heimeier-
Stra-to and Heimeier-Vario



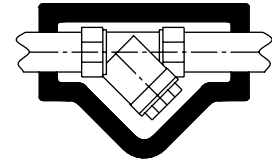
Serie KHM (p. 21)
for ball valves
with socket
connection



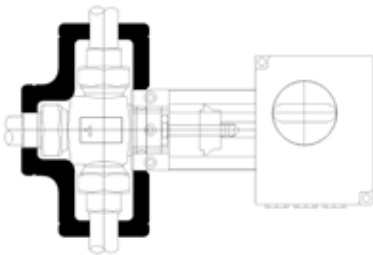
Serie PKH (p. 22)
for pump ball valves



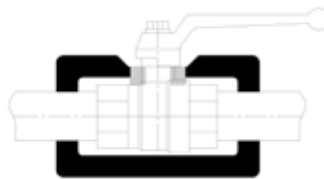
Serie SFM p. 25)
Strainers and check valves in sleeve
design



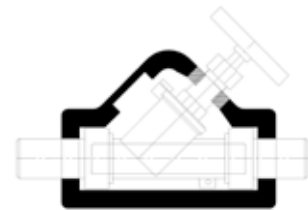
Serie DWM (p. 24)
til trevejsventiler med
muffetilslutning



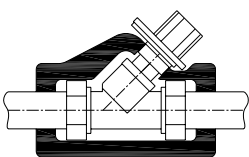
Serie UKM (p. 18)
for all common ball
valves



Serie USV (p. 18)
all common angle
seat valves



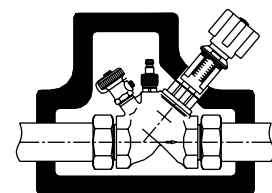
Serie SVK (p. 16)
for angle seat valve
MNG-Kombi II and III



Serie SVM ps. 15)
for valves with angularly seated
spindle and socket connection

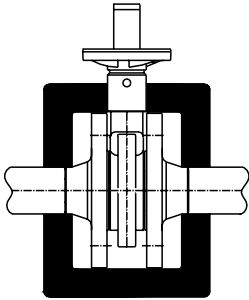


Serie OMG (p. 17)
for Oventrop Hydrocontrol
with socket connection

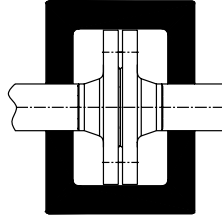


TYPE OVERVIEW WITH FLANGE CONNECTION

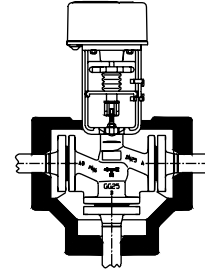
Serie BSC (p. 26)
for KSB
Boa Super Compact



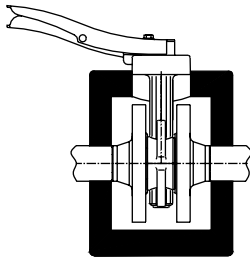
Serie FPA (p. 27)
for bottle pairs and
blind flanges



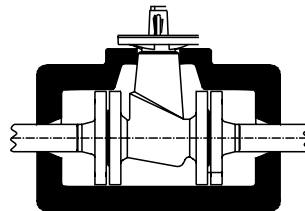
Serie DWV (p. 28)
for three-way control
valves with flanged
connection



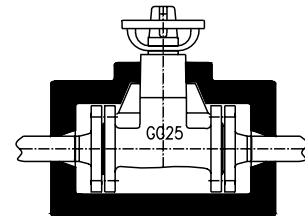
Serie FKL (p. 29)
for butterfly valves, flap
check valves and
compensators



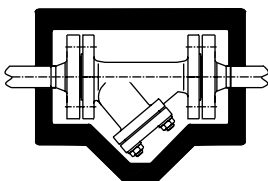
Serie FVK (p. 30)
for short ball, diaphragm,
straight seat and flange valves
to DIN length F4



Serie FVL (p. 31)
for long ball, diaphragm, straight
seat and flange valves to DIN length
F1



Serie SVF (p. 32)
for strainers, angle seat and freeflow
valves with flange connection



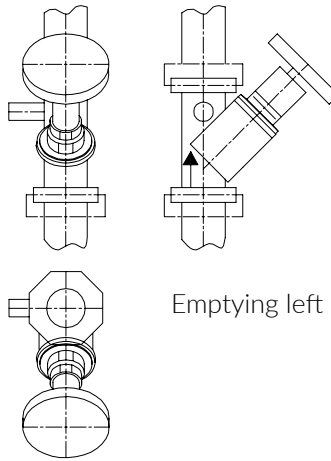
VALVE OVERVIEW

KIEBACK+PETER					
	3-way valve with flange connection	DWV			
	2-way valve with flange connection	FVL			
	3-way valve with threaded connection	DWM			
	2-way valve with threaded connection	GVM			
KLINGER					
	Kugelhahn mit Gewindeanschluss	UKM			
	Kolbenschieberventil, FTF1	FVL			
KSB					
	Control valve BOA-Control SAR	HCM			
	Shut-off valve BOA-Super-Compact	BSC			
	Shut-off valve BOA-Compact, FTF14	FVK			
	Shut-off valve BOA-Compact IMS, FTF14	FVK			
	Shut-off valve BOA-W, FTF1	FVL			
	Shut-off valve BOA-H, FTF1	FVL			
	Diaphragm valve Sisto, FTF1	FVL			
	Butterfly valve BOAX-S	FKL			
	Strainer BOA-S	SVF			
	Check valve BOA-R	SVF			
	Check valve BOA-RVK	FKL			
LANDIS & STAefa					
	3-way valve with flange connection	DWV			
	2-way valve with flange connection	FVL			
	3-way valve with threaded connection	DWM			
	2-way valve with threaded connection	GVM			
LUDEMANN					
	Strainer with flange connection	SVF			
	Ball valve with threaded connection	UKM			
OVENTROP					
	Line regulating valve Hydrocontrol	OMG			
	Flange control valve	SVF			
	Hydrocontrol				
	Balancing valve Hycocoon	HSG			
	Differential pressure regulator Hydromat	auf Anfrage			
	Ball valve with threaded connection	UKM			
	Straight seat valve with threaded connection	GVM			
	Angle seat valve with threaded connection	USV			
	Butterfly valve center flange version	FKL			
	Butterfly valve intermediate construction version	FKL			
	Check valve with threaded connection	SFM			
	Check valve with flange connection	SVF			
	check valve	FKL			
	Intermediate version Strainer with flange connection	SVF			
	Strainer with threaded connection	SFM			
	Aquastrom free-flow valves	OMG			
	Aquastrom free-flow valves with flangee	SVF			
ROSSWEINER					
	Piston valve with threaded connection	GVM			
	Circulation valve with threaded connection	SVK			
SAUTER					
	Throttle intermediate construction version	FKL			
	3-way valve with flange connection	DWV			
	2-way valve with flange connection	FVL			
	3-way valve with threaded connection	DWM			
	2-way valve with threaded connection	GVM			
SCHLÖSSER					
	Free-flow valve with threaded connection	USV			
	Non-return valve with threaded connection	SFM			
SCHMIEDING Armaturen					
	Angle seat valve with threaded connection	USV			
	Ball valve with threaded connection	UKM			
	Piston spool with threaded connection	GVM			
	Butterfly valve type ECLI	FKL			
SCHUBERT+SALZER					
	Angle seat valve with threaded connection	USV			
	3-way valve with threaded connection	DWM			
	Angle seat check valve	SFM			
	Strainer with threaded connection	SFM			
SEPPELFRICKE					
	Angle seat valve with threaded connection	SVK			
	Ball valve with threaded connection	UKM			
	Straight seat valve with threaded connection	GVM			
	Backflow preventer	SFM			
	Circulation valve	SFM			
SFERATEC					
	Ball valve with threaded connection	UKM			
	Sleeve slide with threaded connection	GVM			
	3-way valve with threaded connection	DWM			
Samson					
	3-way valve with flange connection	DWV			
	2-way valve with flange connection	FVL			
	Butterfly valve intermediate construction version	FKL			
TA HEIMEIER					
	Line regulating valve STAD / STAD-C / STAD-R	HCM			
	Zone control valve TBV-C	SVK			
	3-way valve with threaded connection	DWM			
	2-way valve with threaded connection	GVM			
	Shut-off valve STS	HCM			
	Ball valve Globo H	KHM			
	Pump ball valve Globo P + PS	PKH			
TACONOVA					
	Balancing valves Sleeve version	SFM			
	Balancing valves Flange design	SVF			
	3-way valve with threaded connection	DWM			
Viega					
	Angle seat valve with threaded connection	USV			
	Circulation regulating valve	HSG			
	Ball valve with threaded connection	UKM			
Wiesa					
	Ball valve with threaded connection	UKM			
	Muff gate valve	GVM			
	Muff strainer	SFM			
	Muff kickback door	SFM			
	butterfly valve	FKL			

For the definition of the drainage hole
of our Energy Box

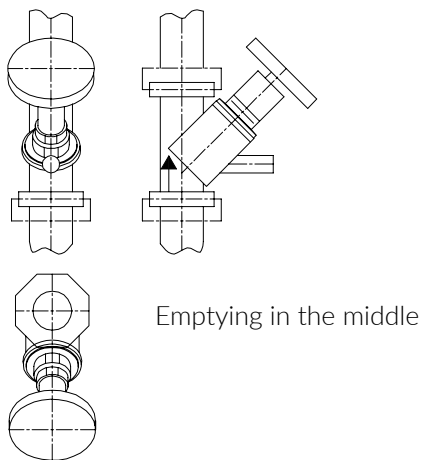
Emptying left in the direction of flow

When emptying on the left, please tick here



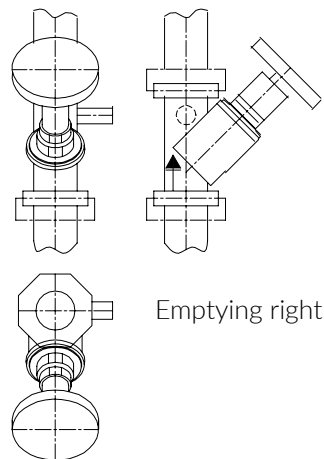
Emptying in the middle in the flow direction

When emptying in the middle, please tick here

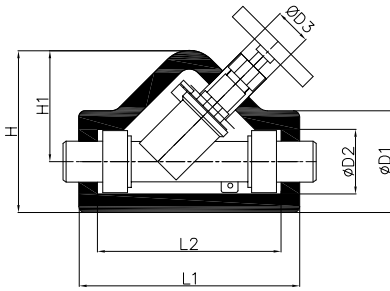


Emptying right in the direction of flow

When emptying right, please tick here



The existing drain hole can be determined on site and tick here in this form and fax us.
Then we will choose the right insulation cap for you.



Valves	Makes / manufacturers
Free-flow valve alwa	MNG
Free flow angle seat valve	Kemper
Angle Seat Valve	Oventrop
Free-flow valve, angle seat valve	Seppelfricke

Specification text Aluminum SURFACE - Energy Box, Alu

Energy Box, aluminum for insulation in the range up to +130 degrees Celsius of the series SVM for valves with inclined spindle and check valves with socket connection. In accordance with the EnEV, consisting of two PUR half-shells encased in aluminum coarse grain sheet metal and fixed with straps.

ALU-SURFACE



Measurements in mm											
Art.-Nr.	DN	Inches	L1	L2	D1	D2	D3	H	H1	Weight (g)	Price in EURO
SVM-AL-010	10	3/8"	104	80	54	30	22	81	54	90	20,70
SVM-AL-015	15	1/2"	138	114	61	37	22	98	69	105	21,30
SVM-AL-020	20	3/4"	155	125	77	47	29	121	82	115	21,60
SVM-AL-025	25	1"	178	148	82	52	29	131	90	135	24,60
SVM-AL-032	32	1 1/4"	202	162	104	64	29	160	105	190	26,90
SVM-AL-040	40	1 1/2"	224	174	120	70	29	186	125	280	29,20
SVM-AL-050	50	2"	248	188	141	82	29	223	153	480	33,30

Dimension D3 is adjusted depending on the valve

Tender specification PS SURFACE - Energy Box, PS

Energy Box, PS for insulation in the range up to +130 degrees Celsius of the series SVM for valves with inclined spindle and check valves with socket connection. According to the EnEV, consisting of two PUR half-shells, which are covered with PS foil and fixed with straps.

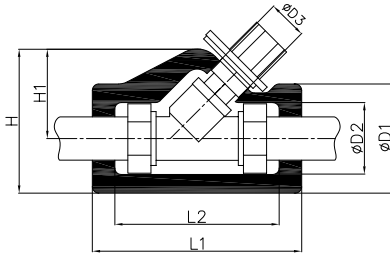
PS-SURFACE



Measurements in mm											
Art.-Nr.	DN	Inches	L1	L2	D1	D2	D3	H	H1	Weight (g)	Price in EURO
SVM-PS-010	10	3/8"	104	80	54	30	22	81	54	90	16,40
SVM-PS-015	15	1/2"	138	114	61	37	22	98	69	105	16,70
SVM-PS-020	20	3/4"	155	125	77	47	29	121	82	115	17,50
SVM-PS-025	25	1"	178	148	82	52	29	131	90	135	19,80
SVM-PS-032	32	1 1/4"	202	162	104	64	29	160	105	190	21,60
SVM-PS-040	40	1 1/2"	224	174	120	70	29	186	125	280	24,30
SVM-PS-050	50	2"	248	188	141	82	29	223	153	480	27,30

Dimension D3 is adjusted depending on the valve

SERIE SVK



Valves	Makes / manufacturers
Angle seat valve Kombi II + III	MNG
Regulating valve	ABA Beul
Circulation regulating valve	Kemper
Circulation valve	Rosswainer
Angle Seat Valve	Seppelfricke

Specification text Aluminum SURFACE, ALU SVK

Energy Box, aluminum for insulation in the range up to +130 degrees Celsius of the series SVK for angle seat valve MNG Kombi II and Kombi III. In accordance with the EnEV, consisting of two PUR half-shells, which are coated with aluminum coarse grain sheet metal and fixed with straps.

ALU-SURFACE



Measurements in mm											
Art.-Nr.	DN	Inches	L1	L2	D1	D2	D3	H	H1	Weight (g)	Price in EURO
SVK-AL-010	10	3/8"	120	96	57	33	32	77	47	85	*
SVK-AL-015	15	1/2"	130	104	62	38	32	91	58	105	*
SVK-AL-020	20	3/4"	139	113	71	45	32	104	67	115	*
SVK-AL-025	25	1"	163	128	85	56	32	112	69	120	*
SVK-AL-032	32	1 1/4"	184	147	99	59	40	137	86	135	*
SVK-AL-040	40	1 1/2"	200	160	109	69	40	146	88	155	*
SVK-AL-050	50	2"	240	190	140	90	40	187	113	230	*

Dimension D3 is adjusted depending on the valve

* Price upon request
q

Tender specification PS SURFACE, PS SVK

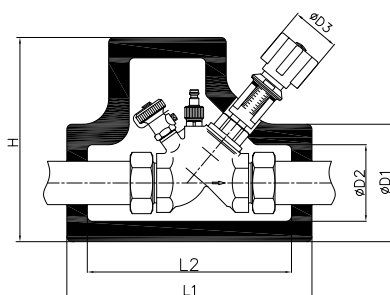
Energy Box, PS for insulation in the range up to +130 degrees Celsius of the series SVK for angle seat valve MNG Kombi II and Kombi III. According to the EnEV consisting of two PUR half-shells, which are coated with PS foil and fixed with straps.

PS-SURFACE



Measurements in mm											
Art.-Nr.	DN	Inches	L1	L2	D1	D2	D3	H	H1	Weight (g)	Price in EURO
SVK-PS-010	10	3/8"	120	96	57	33	32	77	47	85	16,40
SVK-PS-015	15	1/2"	130	104	62	38	32	91	58	105	16,70
SVK-PS-020	20	3/4"	139	113	71	45	32	104	67	115	17,50
SVK-PS-025	25	1"	163	128	85	56	32	112	69	120	19,80
SVK-PS-032	32	1 1/4"	184	147	99	59	40	137	86	135	21,60
SVK-PS-040	40	1 1/2"	200	160	109	69	40	146	88	155	24,30
SVK-PS-050	50	2"	240	190	140	90	40	187	113	230	27,30

Dimension D3 is adjusted depending on the valve



Valves	Makes / manufacturers
Balancing valve Hydrocontrol	Oventrop
Aquastrom Free-flow valve	Oventrop
Alu ALWA K + ALWA KFR	MNG

Specification text Aluminum SURFACE, Alu OMG

Energy Box, aluminum for insulation in the range up to +130 degrees Celsius of the series OMG for Oventrop Hydrocontrol in sleeve design. In accordance with the EnEV, consisting of two PUR half-chalices encased in aluminum coarse grain sheet metal and fixed with straps.

ALU-SURFACE



Measurements in mm										
Art.-Nr.	DN	In-ches	L1	L2	D1	D2	D3	H	Weight (g)	Price in EURO
OMG-AL-010	10	3/8"	180	155	70	46	-	145	90	*
OMG-AL-015	15	1/2"	180	155	70	46	-	145	90	*
OMG-AL-020	20	3/4"	200	170	85	55	-	156	125	*
OMG-AL-025	25	1"	200	170	85	55	-	156	125	*
OMG-AL-032	32	1 1/4"	240	200	115	75	-	200	150	*
OMG-AL-040	40	1 1/2"	250	205	135	75	-	210	190	*
OMG-AL-050	50	2"	265	210	150	90	-	245	210	*
OMG-AL-065	65	2 1/2"	280	220	175	105	-	255	270	*

Dimension D3 is adjusted depending on the valve

* Price upon request

Tender specification PS SURFACE, PS OMG

Energy Box, PS for insulation in the range up to +130 degrees Celsius of the OMG series for Oventrop Hydrocontrol in sleeve design. According to the EnEV, consisting of two PUR half-shells, which are covered with PS foil and fixed with straps.

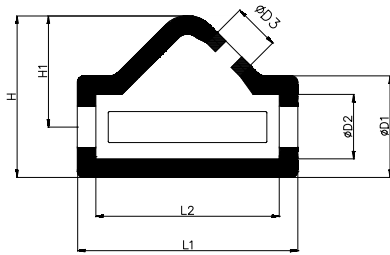
PS-SURFACE



Measurements in mm										
Art.-Nr.	DN	In-ches	L1	L2	D1	D2	D3	H	Weight (g)	Price in EURO
OMG-PS-010	10	3/8"	180	155	70	46	-	145	90	18,30
OMG-PS-015	15	1/2"	180	155	70	46	-	145	90	19,00
OMG-PS-020	20	3/4"	200	170	85	55	-	156	125	19,00
OMG-PS-025	25	1"	200	170	85	55	-	156	125	21,80
OMG-PS-032	32	1 1/4"	240	200	115	75	-	200	150	23,30
OMG-PS-040	40	1 1/2"	250	205	135	75	-	210	190	25,30
OMG-PS-050	50	2"	265	210	150	90	-	245	210	27,80
OMG-PS-065	65	2 1/2"	280	220	175	105	-	255	270	36,90

Dimension D3 is adjusted depending on the valve

SERIE USV



Valves	Makes / manufacturers
--------	-----------------------

All common angle seat valves

Tender specification PS SURFACE, PS USV

Energy Box, PS for insulation in the range up to +130 degrees Celsius of the series UPS for all common valves with angularly arranged spindle and drains with socket connection. According to the EnEV consisting of two PUR half-shells, which are coated with PS foil and fixed with straps.

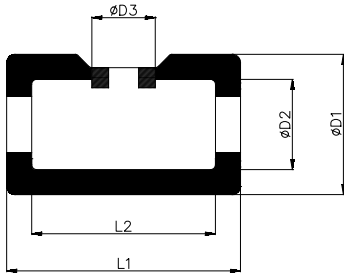
PS-SURFACE



Measurements in mm											
Art.-Nr.	DN	Inches	L1	L2	D1	D2	D3	H	H1	Weight (g)	Price in EURO
USV-PS-010	10	3/8"	104	80	54	30	22	81	54	90	18,30
USV-PS-015	15	1/2"	138	114	61	37	22	98	69	105	19,00
USV-PS-020	20	3/4"	155	125	77	47	29	121	82	115	19,00
USV-PS-025	25	1"	178	148	82	52	29	131	90	135	21,80
USV-PS-032	32	1 1/4"	202	162	104	64	29	160	105	190	23,30
USV-PS-040	40	1 1/2"	224	174	120	70	29	186	125	280	25,30
USV-PS-050	50	2"	248	188	141	82	29	223	153	480	27,80

Dimension D3 is adjusted depending on the valve

SERIE UKM



Valves	Makes / manufacturers
--------	-----------------------

All common ball valves with socket connection

Tender specification PS SURFACE, PS UKM

Specification text Aluminum SURFACE - Energy Box, PS Energy Box, PS for insulation in the range up to +130 degrees Celsius of the series UKM for all common ball valves with socket connection. According to the EnEV, consisting of two PUR half-shells, which are covered with PS foil and fixed with straps.

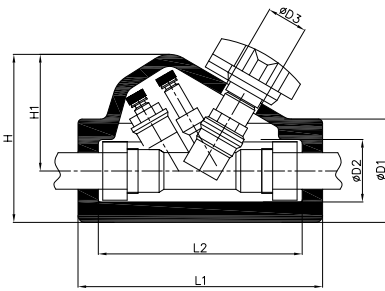
PS-SURFACE



Measurements in mm										
Art.-Nr.	DN	Inches	L1	L2	D1	D2	D3	Weight (g)	Price in EURO	
UKM-PS-010	10	3/8"	101	77	54	30	29	50	16,40	
UKM-PS-015	15	1/2"	121	97	62	38	29	65	16,70	
UKM-PS-020	20	3/4"	139	109	74	44	29	90	17,50	
UKM-PS-025	25	1"	155	125	85	55	29	115	19,80	
UKM-PS-032	32	1 1/4"	209	169	106	66	29	135	21,60	
UKM-PS-040	40	1 1/2"	185	135	125	75	35	125	24,30	
UKM-PS-050	50	2"	220	160	156	96	35	290	27,30	

Dimension D3 is adjusted depending on the valve

SERIE HCM



Valves	Makes / manufacturers
Line regulating valves STS, STAD, STAM, STAP	TA Heimeier
Threaded rope valves	Danfoss
Control valve BOA-Control SAR	KSB

ALU-SURFACE



Specification text Aluminum SURFACE, Alu HCM

Energy Box, aluminum for insulation in the range up to +130 degrees Celsius of the HCM series for TA-ST regulating valves in sleeve design. In accordance with the EnEV, consisting of two PUR half-chalices encased in aluminum coarse grain sheet metal and fixed with straps.

Measurements in mm												
Art.-Nr.	DN	Inches	L1	L2	D1	D2	D3	B	H	H1	Weight (g)	Price in EURO
HCM-AL-010	10	3/8"	180	150	76	46	29	116	124	85	90	*
HCM-AL-015	15	1/2"	180	150	76	46	29	116	124	85	90	*
HCM-AL-020	20	3/4"	180	150	76	46	29	116	124	85	90	*
HCM-AL-025	25	1"	200	170	84	54	29	126	136	94	125	*
HCM-AL-032	32	1 1/4"	230	190	99	59	29	135	153	103	150	*
HCM-AL-040	40	1 1/2"	250	205	122	72	29	143	179	118	190	*
HCM-AL-050	50	2"	291	241	125	95	29	166	178	116	210	*

Dimension D3 is adjusted depending on the valve

*Price upon request

PS-SURFACE

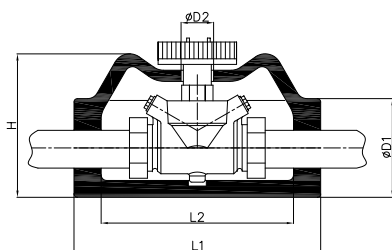


Tender specification PS SURFACE, PS HCM

Energy Box, PS for insulation in the range up to +130 degrees Celsius of the HCM series for TA-ST regulating valves in sleeve design. According to the EnEV, consisting of two PUR half-shells, which are covered with PS foil and fixed with straps.

Measurements in mm												
Art.-Nr.	DN	Inches	L1	L2	D1	D2	D3	B	H	H1	Weight (g)	Price in EURO
HCM-PS-010	10	3/8"	180	150	76	46	29	116	124	85	90	18,30
HCM-PS-015	15	1/2"	180	150	76	46	29	116	124	85	90	19,00
HCM-PS-020	20	3/4"	180	150	76	46	29	116	124	85	90	19,00
HCM-PS-025	25	1"	200	170	84	54	29	126	136	94	125	21,80
HCM-PS-032	32	1 1/4"	230	190	99	59	29	135	153	103	150	23,30
HCM-PS-040	40	1 1/2"	250	205	122	72	29	143	179	118	190	25,30
HCM-PS-050	50	2"	291	241	125	95	29	166	178	116	210	27,80

Dimension D3 is adjusted depending on the valve



Valves	Makes / manufacturers
Multi-Therm Circulation Valve	Kemper
Flow Control Valve Hycocan	Oventrop
Circulation Control Valve	Viega

Specification text Aluminum SURFACE, Alu HSG

Energy Box, aluminum for insulation in the range up to +130 degrees Celsius of the HSG series for Kemper Multi-Therm. In accordance with the EnEV, consisting of two PUR half-shells encased with aluminum coarse grain sheet metal and fixed with straps.

ALU- SURFACE



Measurements in mm										
Art.-Nr.	DN	In-ches	L1	L2	D1	D2	D3	H	Weight (g)	Price in EURO
HSG-AL-010	10	3/8"	220	190	73	27	-	113	140	*
HSG-AL-015	15	1/2"	220	190	73	27	-	113	140	*
HSG-AL-020	20	3/4"	220	190	73	27	-	113	140	*
HSG-AL-025	25	1"	220	172	88	27	-	128	140	*
HSG-AL-032	32	1 1/4"	228	182	105	29	-	138	180	*
HSG-AL-040	40	1 1/2"	241	197	122	29	-	152	240	*
HSG-AL-050	50	2"	247	197	148	29	-	178	240	*

Dimension D3 is adjusted depending on the valve

*Price upon request

Tender specification PS surface, PS HSG

Energy Box, PS for insulation up to +130 degrees Celsius of the HSG series for Kemper Multi-Therm. In accordance with the EnEV consisting of two PUR half-shells, which are jacketed with PS foil and fixed with straps.

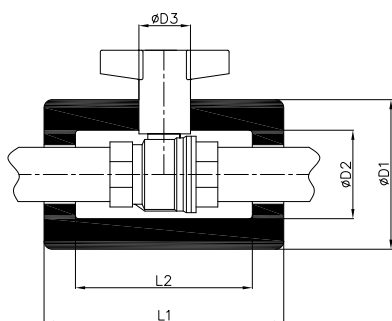
PS-SURFACE



Measurements in mm										
Art.-Nr.	DN	In-ches	L1	L2	D1	D2	D3	H	Weight (g)	Price in EURO
HSG-PS-010	10	3/8"	220	190	73	27	-	113	140	19,20
HSG-PS-015	15	1/2"	220	190	73	27	-	113	140	19,20
HSG-PS-020	20	3/4"	220	190	73	27	-	113	140	19,20
HSG-PS-025	25	1"	220	172	88	27	-	128	140	21,90
HSG-PS-032	32	1 1/4"	228	182	105	29	-	138	180	23,70
HSG-PS-040	40	1 1/2"	241	197	122	29	-	152	240	26,70
HSG-PS-050	50	2"	247	197	148	29	-	178	240	29,70

Dimension D3 is adjusted depending on the valve

SERIE KHM



Valves	Makes / manufacturers
Ball valve, Globo H	Heimeier
Ball valve, Optibal	Oventrop

Specification text Aluminum surface, Alu KHM

Energy Box, aluminum for insulation in the range up to +130 degrees Celsius of the series KHM for heating ball valves with socket connection. In accordance with the EnEV, consisting of two PUR half-shells, which are coated with aluminum coarse grain sheet metal and fixed with straps.

ALU-SURFACE



Measurements in mm									
Art.-Nr.	DN	Inches	L1	L2	D1	D2	D3	Weight (g)	Price in EURO
KHM-AL-010	10	3/8"	101	77	54	30	29	50	*
KHM-AL-015	15	1/2"	121	97	62	38	29	65	*
KHM-AL-020	20	3/4"	139	109	74	44	29	90	*
KHM-AL-025	25	1"	155	125	85	55	29	115	*
KHM-AL-032	32	1 1/4"	209	169	106	66	29	135	*
KHM-AL-040	40	1 1/2"	185	135	125	75	35	125	*
KHM-AL-050	50	2"	220	160	156	96	35	290	*

Dimension D3 is adjusted depending on the valve

*Price upon request

Tender specification PS surface, PS KHM

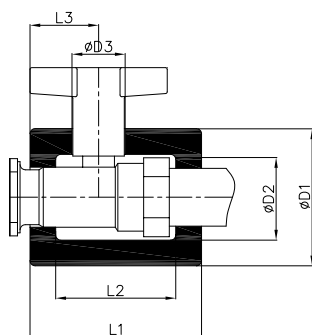
Energy Box, PS for insulation in the range up to +130 degrees Celsius of the series KHM for heating ball valves with socket connection. According to the EnEV consisting of two PUR half-shells, which are coated with PS foil and fixed with straps.

PS-SURFACE



Measurements in mm									
Art.-Nr.	DN	Inches	L1	L2	D1	D2	D3	Weight (g)	Price in EURO
KHM-PS-010	10	3/8"	101	77	54	30	29	50	11,60
KHM-PS-015	15	1/2"	121	97	62	38	29	65	11,90
KHM-PS-020	20	3/4"	139	109	74	44	29	90	12,50
KHM-PS-025	25	1"	155	125	85	55	29	115	14,10
KHM-PS-032	32	1 1/4"	209	169	106	66	29	135	17,00
KHM-PS-040	40	1 1/2"	185	135	125	75	35	125	20,40
KHM-PS-050	50	2"	220	160	156	96	35	290	24,50

Dimension D3 is adjusted depending on the valve



Valves	Makes / manufacturers
Pump ball valve Globo-P	Heimeier
Pump ball valve	Oventrop

Specification text Aluminum surface, Alu PKH

Energy Box, aluminum for insulation in the range up to +130 degrees Celsius of series PKH for pump-ball valves. In accordance with the EnEV, consisting of two PUR half-shells encased with aluminum coarse grain sheet metal and fixed with straps.

ALU-SURFACE



Measurements in mm										
Art.-Nr.	DN	Inches	L1	L2	L3	D1	D2	D3	Weight (g)	Price in EURO
PKH-AL-025	25/25	1 x 1"	100	70	37	80	50	29	70	*
PKH-AL-031	32/25	1 ¼ x 1"	110	80	45	102	62	29	75	*
PKH-AL-032	32/32	1 ¼ x 1 ¼"	110	80	45	102	62	29	75	*

Dimension D3 is adjusted depending on the valve

*Price upon request

Tender specification PS surface, PS PKH

Energy Box, PS for insulation in the range up to +130 degrees Celsius of series PKH for pump-ball valves. According to the EnEV consisting of two PUR half-shells, which are coated with PS foil and fixed with straps.

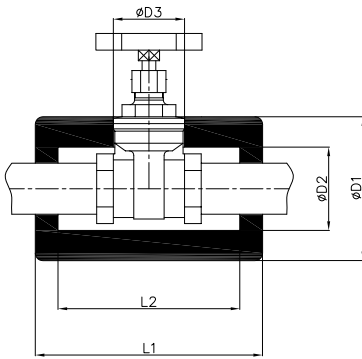
PS-SURFACE



Measurements in mm										
Art.-Nr.	DN	Inches	L1	L2	L3	D1	D2	D3	Weight (g)	Price in EURO
PKH-PS-025	25/25	1 x 1"	100	70	37	80	50	29	70	12,50
PKH-PS-031	32/25	1 ¼ x 1"	110	80	45	102	62	29	75	14,10
PKH-PS-032	32/32	1 ¼ x 1 ¼"	110	80	45	102	62	29	75	16,90

Dimension D3 is adjusted depending on the valve

SERIE GVM



Valves	Makes / manufacturers
Piston valves with thread	ABA Beul
Straight seat valves & piston valves with thread	Bender
two-way control valve	Danfoss
Gate valve	Duramar

and all manufacturers to DIN length

Specification text Aluminum surface, Alu GVM

Energy Box, aluminum for insulation in the range up to +130 degrees Celsius of the GVM series for gate valves, straight seat valves and non-return caps with socket connection. In accordance with the EnEV, consisting of two PUR half-shells encased in aluminum coarse grain sheet metal and fixed with straps.

ALU-SURFACE



Measurements in mm									
Art.-Nr.	DN	Inches	L1	L2	D1	D2	D3	Weight (g)	Price in EURO
GVM-AL-010	10	3/8"	99	75	64	34	-	75	*
GVM-AL-015	15	1/2"	99	75	64	34	-	80	*
GVM-AL-020	20	3/4"	111	81	71	41	-	115	*
GVM-AL-025	25	1"	150	120	95	55	-	120	*
GVM-AL-032	32	1 1/4"	165	125	100	60	-	135	*
GVM-AL-040	40	1 1/2"	180	130	115	65	-	160	*
GVM-AL-050	50	2"	215	155	150	90	-	300	*

Dimension D3 is adjusted depending on the valve

*Price upon request

Tender specification PS surface, PS GVM

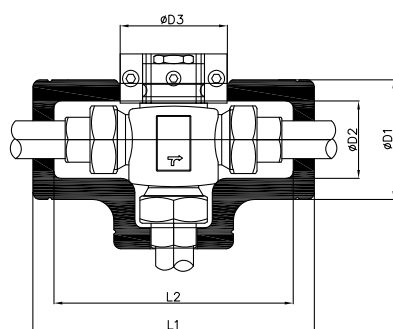
Energy Box, PS for insulation in the range up to +130 degrees Celsius of the series GVM series for gate valves, straight seat valves and check caps with socket connection. According to the EnEV, consisting of two PUR half-shells, which are covered with PS foil and fixed with straps.

PS-SURFACE



Measurements in mm									
Art.-Nr.	DN	Inches	L1	L2	D1	D2	D3	Weight (g)	Price in EURO
GVM-PS-010	10	3/8"	101	77	54	30	-	50	16,40
GVM-PS-015	15	1/2"	121	97	62	38	-	65	16,70
GVM-PS-020	20	3/4"	139	109	74	44	-	90	17,50
GVM-PS-025	25	1"	155	125	85	55	-	115	19,80
GVM-PS-032	32	1 1/4"	209	169	106	66	-	135	21,60
GVM-PS-040	40	1 1/2"	185	135	125	75	-	125	24,30
GVM-PS-050	50	2"	220	160	156	96	-	290	27,30

Dimension D3 is adjusted depending on the valve



Valves

Makes / manufacturers

For all common three-way valves with threaded connection

Specification text Aluminum surface, DWM

Energy Box, aluminum for insulation in the range up to +130 degrees Celsius of the series DWM for three-way valves with socket connection. In accordance with the EnEV, consisting of two PUR half-shells encased in aluminum coarse grain sheet metal and fixed with straps.

ALU-SURFACE



Measurements in mm									
Art.-Nr.	DN	Inches	L1	L2	D1	D2	D3	Weight (g)	Price in EURO
DWM-AL-010	10	3/8"	101	77	54	30	29	50	23,70
DWM-AL-015	15	1/2"	121	97	62	38	29	65	23,90
DWM-AL-020	20	3/4"	139	109	74	44	29	90	24,20
DWM-AL-025	25	1"	155	125	85	55	29	115	26,90
DWM-AL-032	32	1 1/4"	209	169	106	66	29	135	29,30
DWM-AL-040	40	1 1/2"	185	135	125	75	35	125	30,80
DWM-AL-050	50	2"	220	160	156	96	35	290	35,40

Dimension D3 is adjusted depending on the valve

Tender specification PS surface, DWM

Energy Box, PS for insulation in the range up to +130 degrees Celsius of the series DWM for three-way valves with socket connection. According to the EnEV consisting of two PUR half-shells, which are coated with PS foil and fixed with straps.

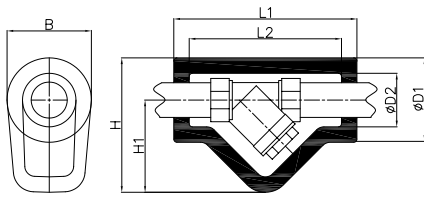
PS-SURFACE



Measurements in mm									
Art.-Nr.	DN	Inches	L1	L2	D1	D2	D3	Weight (g)	Price in EURO
DWM-PS-010	10	3/8"	101	77	54	30	29	50	19,20
DWM-PS-015	15	1/2"	121	97	62	38	29	65	19,20
DWM-PS-020	20	3/4"	139	109	74	44	29	90	19,20
DWM-PS-025	25	1"	155	125	85	55	29	115	21,90
DWM-PS-032	32	1 1/4"	209	169	106	66	29	135	23,70
DWM-PS-040	40	1 1/2"	185	135	125	75	35	125	26,70
DWM-PS-050	50	2"	220	160	156	96	35	290	29,70

Dimension D3 is adjusted depending on the valve

SERIE SFM



Valves Makes / manufacturers

For all common strainers with threaded connection

Specification text Aluminum surface, SFM

Energy Box, aluminum for insulation in the range up to +130 degrees Celsius of the series SFM for mudguard in sleeve design. In accordance with the EnEV, consisting of two PUR half-shells encased in aluminum coarse grain sheet metal and fixed with straps.

ALU-SURFACE



Measurements in mm											
Art.-Nr.	DN	Inches	L1	L2	D1	D2	B	H	H1	Weight (g)	Price in EURO
SFM-AL-010	10	3/8"	104	80	54	30	54	81	54	95	*
SFM-AL-015	15	1/2"	138	114	61	37	61	98	69	105	*
SFM-AL-020	20	3/4"	155	125	77	47	77	121	82	160	*
SFM-AL-025	25	1"	178	148	82	52	82	131	90	220	*
SFM-AL-032	32	1 1/4"	202	162	104	64	104	160	105	250	*
SFM-AL-040	40	1 1/2"	224	174	120	70	120	186	125	300	*
SFM-AL-050	50	2"	248	188	141	82	141	223	153	500	*

Dimension D3 is adjusted depending on the valve

*Price upon request

Tender specification PS surface, PS SFM

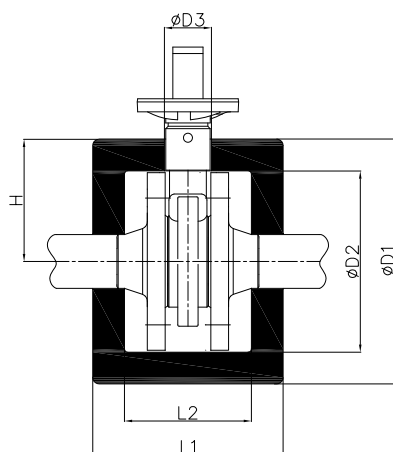
Energy Box, PS for insulation in the range up to +130 degrees Celsius of the series SFM for dirt trap in sleeve design. According to the EnEV consisting of two PUR half-shells, which are coated with PS foil and fixed with straps.

PS-SURFACE



Measurements in mm											
Art.-Nr.	DN	Inches	L1	L2	D1	D2	B	H	H1	Weight (g)	Price in EURO
SFM-PS-010	10	3/8"	104	80	54	30	54	81	54	95	16,40
SFM-PS-015	15	1/2"	138	114	61	37	61	98	69	105	16,40
SFM-PS-020	20	3/4"	155	125	77	47	77	121	82	160	17,50
SFM-PS-025	25	1"	178	148	82	52	82	131	90	220	19,80
SFM-PS-032	32	1 1/4"	202	162	104	64	104	160	105	250	21,60
SFM-PS-040	40	1 1/2"	224	174	120	70	120	186	125	300	24,30
SFM-PS-050	50	2"	248	188	141	82	141	223	153	500	27,30

Dimension D3 is adjusted depending on the valve



ALU-SURFACE



Valves	Makes / manufacturers
BOA Super Compact	KSB

Specification text Aluminum surface, BSC

Energy Box, aluminum for insulation in the range up to +130 degrees Celsius of the series BSC for KSB - BOA Super Compact. In accordance with the EnEV, consisting of two PUR half-shells encased in aluminum coarse grain sheet metal and fixed with straps.

Measurements in mm											
Art.-Nr.	DN	Inches	L1	L2	D1	D2	D3	H	Weight (g)	Price in EURO	
BSC-AL-015	15	½"	140	100	156	116	35	78	205	*	
BSC-AL-020	20	¾"	140	100	156	116	35	78	205	*	
BSC-AL-025	25	1"	140	100	163	123	35	82	215	*	
BSC-AL-032	32	1 ¼"	165	115	193	143	35	97	410	*	
BSC-AL-040	40	1 ½"	175	125	208	158	35	104	420	*	
BSC-AL-050	50	2"	195	145	224	174	46	112	570	*	
BSC-AL-065	65	2 ½"	220	160	254	194	48	127	590	*	
BSC-AL-080	80	3"	265	185	292	212	54	146	830	*	
BSC-AL-100	100	4"	300	210	317	227	64	159	870	*	
BSC-AL-125	125	5"	340	240	355	255	83	178	980	*	
BSC-AL-150	150	6"	365	265	395	295	83	198	1150	*	

Dimension D3 is adjusted depending on the valve

*Price upon request

Tender specification PS surface, BSC

Energy Box, PS for insulation in the range up to +130 degrees Celsius of the series BSC for KSB - BOA Super Compact. According to the EnEV consisting of two PUR half-shells, which are coated with PS foil and fixed with straps.

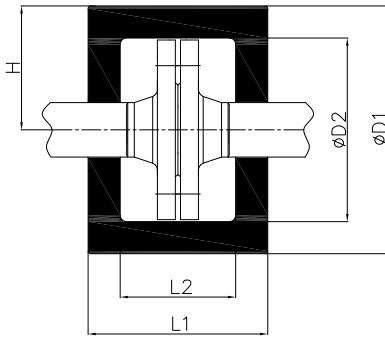
PS-SURFACE



Measurements in mm											
Art.-Nr.	DN	Inches	L1	L2	D1	D2	D3	H	Weight (g)	Price in EURO	
BSC-PS-015	15	½"	140	100	156	116	35	78	205	35,30	
BSC-PS-020	20	¾"	140	100	156	116	35	78	205	36,70	
BSC-PS-025	25	1"	140	100	163	123	35	82	215	37,70	
BSC-PS-032	32	1 ¼"	165	115	193	143	35	97	410	44,60	
BSC-PS-040	40	1 ½"	175	125	208	158	35	104	420	49,00	
BSC-PS-050	50	2"	195	145	224	174	46	112	570	54,70	
BSC-PS-065	65	2 ½"	220	160	254	194	48	127	590	64,20	
BSC-PS-080	80	3"	265	185	292	212	54	146	830	74,70	
BSC-PS-100	100	4"	300	210	317	227	64	159	870	85,40	
BSC-PS-125	125	5"	340	240	355	255	83	178	980	97,00	
BSC-PS-150	150	6"	365	265	395	295	83	198	1150	106,20	

Dimension D3 is adjusted depending on the valve

SERIE FPA



Valves	Makes / manufacturers
--------	-----------------------

Flanges couples
Blind flanges

Specification text Aluminum surface, FPA

Energy Box, aluminum for insulation in the range up to +130 degrees Celsius of the FPA series for flank pairs and blind flanges. In accordance with the EnEV, consisting of two PUR half-shells encased in aluminum coarse grain sheet metal and fixed with straps.

ALU-SURFACE



Measurements in mm										
Art.-Nr.	VVS nr.	DN	Inches	L1	L2	D1	D2	H	Weight (g)	Price in EURO
FPA-AL-015	499261004	15	½"	123	83	156	116	78	190	*
FPA-AL-020	499261006	20	¾"	123	83	156	116	78	190	*
FPA-AL-025	499261008	25	1"	123	83	163	123	81,5	200	*
FPA-AL-032	499261010	32	1 ¼"	140	90	193	143	96,5	380	*
FPA-AL-040	499261011	40	1 ½"	144	94	208	158	104	395	*
FPA-AL-050	499261012	50	2"	150	100	224	174	112	405	*
FPA-AL-065	499261013	65	2 ½"	160	100	254	194	127	455	*
FPA-AL-080	499261014	80	3"	190	110	292	212	146	750	*
FPA-AL-100	499261016	100	4"	204	114	317	227	158	805	*
FPA-AL-125	499261017	125	5"	210	110	355	255	177	900	*
FPA-AL-150	499261018	150	6"	215	115	395	295	197	1000	*

Dimension D3 is adjusted depending on the valve

*Price upon request

Tender specification PS surface, FPA

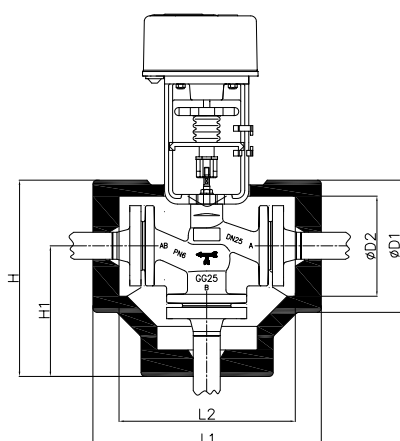
Energy Box, PS for insulation in the range up to +130 degrees Celsius of the FPA series for flank pairs and blind flanges. According to the EnEV consisting of two PUR half-shells, which are coated with PS foil and fixed with straps.

PS-SURFACE



Measurements in mm										
Art.-Nr.	VVS nr.	DN	Inches	L1	L2	D1	D2	H	Weight (g)	Price in EURO
FPA-PS-015	499261104	15	½"	123	83	156	116	78	190	26,80
FPA-PS-020	499261106	20	¾"	123	83	156	116	78	190	26,90
FPA-PS-025	499261108	25	1"	123	83	163	123	81,5	200	27,30
FPA-PS-032	499261110	32	1 ¼"	140	90	193	143	96,5	380	28,50
FPA-PS-040	499261111	40	1 ½"	144	94	208	158	104	395	31,30
FPA-PS-050	499261112	50	2"	150	100	224	174	112	405	34,20
FPA-PS-065	499261113	65	2 ½"	160	100	254	194	127	455	42,30
FPA-PS-080	499261114	80	3"	190	110	292	212	146	750	48,40
FPA-PS-100	499261116	100	4"	204	114	317	227	158	805	53,50
FPA-PS-125	499261117	125	5"	210	110	355	255	177	900	60,00
FPA-PS-150	499261118	150	6"	215	115	395	295	197	1000	67,50

Dimension D3 is adjusted depending on the valve



Valves	Makes / manufacturers
--------	-----------------------

Three-way flange control valve	Danfoss
Three-way mixer with flange connection	Honeywell
Three-way valve with flange connection	Honeywell
Three-way valve with flange connection	Kieback + Peter
Three-way valve with flange connection	Landis & Staefa

Specification text Aluminum surface, DWV

Energy Box, aluminum for insulation in the range up to +130 degrees Celsius of the series DWV for three-way valves with flange connection. In accordance with the EnEV, consisting of two PUR half-shells encased in aluminum coarse grain sheet metal and fixed with straps.

ALU-SURFACE



Measurements in mm										
Art.-Nr.	DN	Inches	L1	L2	D1	D2	H	H1	Weight (g)	Price in EURO
DWV-AL-015	15	½"	275	235	150	110	210	135	660	37,60
DWV-AL-020	20	¾"	275	235	150	110	210	135	660	39,00
DWV-AL-025	25	1"	280	240	160	120	225	145	690	40,80
DWV-AL-032	32	1 ¼"	330	280	195	145	277	180	780	46,20
DWV-AL-040	40	1 ½"	345	295	205	155	282	180	790	48,90
DWV-AL-050	50	2"	390	330	232	172	306	190	1050	54,90
DWV-AL-065	65	2 ½"	475	405	272	192	351	215	1590	68,20
DWV-AL-080	80	3"	495	415	300	210	385	235	2902	81,60
DWV-AL-100	100	4"	550	470	327	227	408	245	2810	101,00
DWV-AL-125	125	5"	615	525	360	260	485	285	3210	121,70
DWV-AL-150	150	6"	695	595	390	290	515	320	3610	140,10

Dimension D3 is adjusted depending on the valve

Tender specification PS surface, DWV

Energy Box, PS for insulation in the range up to +130 degrees Celsius of the series DWV for three-way valves with flange connection. According to the EnEV consisting of two PUR half-shells, which are coated with PS foil and fixed with straps.

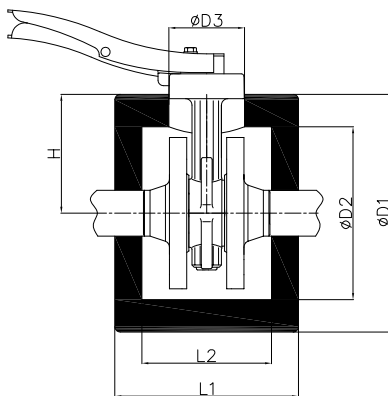
PS-SURFACE



Measurements in mm										
Art.-Nr.	DN	Inches	L1	L2	D1	D2	H	H1	Weight (g)	Price in EURO
DWV-PS-015	15	½"	275	235	150	110	210	135	660	57,30
DWV-PS-020	20	¾"	275	235	150	110	210	135	660	58,50
DWV-PS-025	25	1"	280	240	160	120	225	145	690	62,20
DWV-PS-032	32	1 ¼"	330	280	195	145	277	180	780	70,70
DWV-PS-040	40	1 ½"	345	295	205	155	282	180	790	80,30
DWV-PS-050	50	2"	390	330	232	172	306	190	1050	94,60
DWV-PS-065	65	2 ½"	475	405	272	192	351	215	1590	112,90
DWV-PS-080	80	3"	495	415	300	210	385	235	2902	138,40
DWV-PS-100	100	4"	550	470	327	227	408	245	2810	174,70
DWV-PS-125	125	5"	615	525	360	260	485	285	3210	204,10
DWV-PS-150	150	6"	695	595	390	290	515	320	3610	216,80

Dimension D3 is adjusted depending on the valve

SERIE FKL



Valves	Makes / manufacturers
Shut-off flap ZESA / GESA	Ari
Shut-off flap Z011	Ebro
Butterfly valves	GEFA
DISCO check valve	Gestra
Shut-off valve Boax-S	KSB

Specification text Aluminum surface, FKL

Energy Box, aluminum for insulation in the range up to +130 degrees Celsius of the series FKL for shut-off valves, flap check valves and compensators. In accordance with the EnEV, consisting of two PUR half-shells encased in aluminum coarse grain sheet metal and fixed with clamping straps.

ALU-SURFACE



Measurements in mm										
Art.-Nr.	DN	Inches	L1	L2	D1	D2	D3	H	Weight (g)	Price in EURO
FKL-AL-015	15	½"	140	100	156	116	38	78	205	33,30
FKL-AL-020	20	¾"	140	100	156	116	38	78	205	34,50
FKL-AL-025	25	1"	140	100	163	123	38	81,5	215	37,00
FKL-AL-032	32	1 ¼"	150	100	193	143	38	96,5	410	39,70
FKL-AL-040	40	1 ½"	150	100	208	158	38	104	415	41,90
FKL-AL-050	50	2"	160	110	224	174	38	112	550	44,70
FKL-AL-065	65	2 ½"	179	119	254	194	41	127	570	49,70
FKL-AL-080	80	3"	215	135	292	212	51	146	810	60,40
FKL-AL-100	100	4"	230	140	317	227	51	158	835	71,60
FKL-AL-125	125	5"	260	160	355	225	92	177,5	940	81,90
FKL-AL-150	150	6"	260	160	395	295	92	197,5	1090	96,80

Dimension D3 is adjusted depending on the valve

Tender specification PS surface, FKL

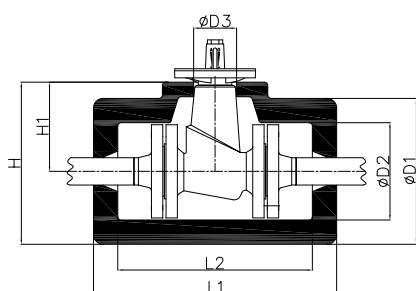
Energy Box, PS for insulation in the range up to +130 degrees Celsius of the series FKL for shut-off valves, flap check valves and compensators. According to the EnEV consisting of two PUR half-shells, which are coated with PS foil and fixed with straps.

PS-SURFACE



Measurements in mm										
Art.-Nr.	DN	Inches	L1	L2	D1	D2	D3	H	Weight (g)	Price in EURO
FKL-PS-015	15	½"	140	100	156	116	38	78	205	27,30
FKL-PS-020	20	¾"	140	100	156	116	38	78	205	27,80
FKL-PS-025	25	1"	140	100	163	123	38	81,5	215	31,30
FKL-PS-032	32	1 ¼"	150	100	193	143	38	96,5	410	35,30
FKL-PS-040	40	1 ½"	150	100	208	158	38	104	415	42,00
FKL-PS-050	50	2"	160	110	224	174	38	112	550	45,70
FKL-PS-065	65	2 ½"	179	119	254	194	41	127	570	51,40
FKL-PS-080	80	3"	215	135	292	212	51	146	810	59,70
FKL-PS-100	100	4"	230	140	317	227	51	158	835	66,10
FKL-PS-125	125	5"	260	160	355	225	92	177,5	940	79,60
FKL-PS-150	150	6"	260	160	395	295	92	197,5	1090	96,30

Dimension D3 is adjusted depending on the valve



Valves	Makes / manufacturers
Shut-off valve Euro Wedi FTF 14	ARI
Wedge gate valve, FTF 14	Fromme
Shut-off valve BOA-Compact	KSB
Shut-off valve BOA-Compact IMS	KSB

Specification text Aluminum surface, FVK

Energy Box, aluminum for insulation in the range up to +130 degrees Celsius of the series FVK for short ball, diaphragm, straight seat valves and flanges according to DIN length, F4. According to the EnEV, consisting of two PUR half-shells encased in aluminum coarse grain sheet metal and fixed with straps.

ALU-SURFACE



Measurements in mm											
Art.-Nr.	DN	Inches	L1	L2	D1	D2	D3	H	H1	Weight (g)	Price in EURO
FVK-AL-015	15	½"	230	190	140	100		170	100	450	*
FVK-AL-020	20	¾"	240	200	150	110		180	105	620	*
FVK-AL-025	25	1"	245	205	160	120		185	105	1010	*
FVK-AL-032	32	1 ¼"	260	210	195	145		220	123	1150	*
FVK-AL-040	40	1 ½"	280	230	205	155		248	145	1200	*
FVK-AL-050	50	2"	300	240	232	172		266	150	1250	*
FVK-AL-065	65	2 ½"	335	265	272	192		321	185	1310	*
FVK-AL-080	80	3"	355	275	300	210		350	200	1410	*
FVK-AL-100	100	4"	375	295	327	227		374	210	1490	*
FVK-AL-125	125	5"	405	315	359	260		435	255	1640	*
FVK-AL-150	150	6"	435	335	390	290		495	300	1730	*

Dimension D3 is adjusted depending on the valve

*Price upon request

Tender specification PS surface, FVK

Energy Box, PS for insulation in the range up to +130 degrees Celsius of the FVK series for short ball, diaphragm, straight seat valves and flanges according to DIN length, F4. According to the EnEV consisting of two PUR half-shells, which are coated with PS foil and fixed with straps.

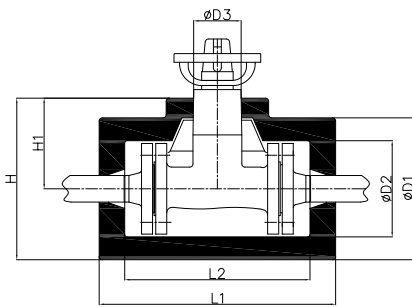
PS-SURFACE



Measurements in mm											
Art.-Nr.	DN	Inches	L1	L2	D1	D2	D3	H	H1	Weight (g)	Price in EURO
FVK-PS-015	15	½"	230	190	140	100		170	100	450	35,10
FVK-PS-020	20	¾"	240	200	150	110		180	105	620	35,30
FVK-PS-025	25	1"	245	205	160	120		185	105	1010	37,10
FVK-PS-032	32	1 ¼"	260	210	195	145		220	123	1150	42,40
FVK-PS-040	40	1 ½"	280	230	205	155		248	145	1200	48,00
FVK-PS-050	50	2"	300	240	232	172		266	150	1250	53,80
FVK-PS-065	65	2 ½"	335	265	272	192		321	185	1310	62,00
FVK-PS-080	80	3"	355	275	300	210		350	200	1410	73,50
FVK-PS-100	100	4"	375	295	327	227		374	210	1490	85,00
FVK-PS-125	125	5"	405	315	359	260		435	255	1640	96,50
FVK-PS-150	150	6"	435	335	390	290		495	300	1730	109,90

Dimension D3 is adjusted depending on the valve

SERIE FVL



Valves	Makes / manufacturers
Shut-off valve Euro Wedi, FABA-Plus, Astra in length FTF 1	ARI
Flow Valve, FTF 1	FROMME
Shut-off valve GAV	Gestra
Line regulating and shut-off valve Kombi-F	Honeywell
Shut-off valve Boa-H, Boa-W, Sisto	KSB

Specification text Aluminum surface, FVL

Energy Box, aluminum for insulation in the range up to +130 degrees Celsius of the series FVL for long ball, diaphragm, straight seat valves and flanges according to DIN length, F1. According to the EnEV, consisting of two PUR half-shells encased in aluminum coarse grain sheet metal and fixed with straps.

ALU-SURFACE



Measurements in mm											
Art.-Nr.	DN	Inches	L1	L2	D1	D2	D3	H	H1	Weight (g)	Price in EURO
FVL-AL-015	15	½"	245	205	140	100	38	170	100	470	*
FVL-AL-020	20	¾"	275	235	150	110	38	180	105	640	*
FVL-AL-025	25	1"	280	240	160	120	38	185	105	1040	*
FVL-AL-032	32	1 ¼"	330	280	195	145	38	220	123	1170	*
FVL-AL-040	40	1 ½"	345	295	205	155	38	240	138	1270	*
FVL-AL-050	50	2"	390	330	232	172	38	261	145	1290	*
FVL-AL-065	65	2 ½"	475	405	272	192	38	306	170	1370	*
FVL-AL-080	80	3"	495	415	300	210	43	350	200	1510	*
FVL-AL-100	100	4"	550	470	327	227	43	374	210	1690	*
FVL-AL-125	125	5"	675	525	359	260	43	435	255	1730	*
FVL-AL-150	150	6"	695	595	390	290	51	495	300	1805	*

Dimension D3 is adjusted depending on the valve

*Price upon request

Energy Box, PS FVL

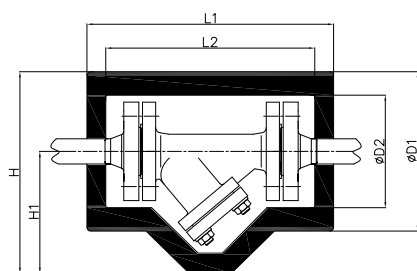
Energy Box, PS for insulation in the range up to +130 degrees Celsius of the series FVL for long ball, diaphragm, straight seat valves and flanges according to DIN length, F1. According to the EnEV consisting of two PUR half-shells, which are coated with PS foil and fixed with straps.

PS-SURFACE



Measurements in mm											
Art.-Nr.	DN	Inches	L1	L2	D1	D2	D3	H	H1	Weight (g)	Price in EURO
FVL-PS-015	15	½"	245	205	140	100	38	170	100	470	37,70
FVL-PS-020	20	¾"	275	235	150	110	38	180	105	640	38,70
FVL-PS-025	25	1"	280	240	160	120	38	185	105	1040	41,70
FVL-PS-032	32	1 ¼"	330	280	195	145	38	220	123	1170	48,20
FVL-PS-040	40	1 ½"	345	295	205	155	38	240	138	1270	54,90
FVL-PS-050	50	2"	390	330	232	172	38	261	145	1290	65,70
FVL-PS-065	65	2 ½"	475	405	272	192	38	306	170	1370	79,90
FVL-PS-080	80	3"	495	415	300	210	43	350	200	1510	98,10
FVL-PS-100	100	4"	550	470	327	227	43	374	210	1690	125,60
FVL-PS-125	125	5"	675	525	359	260	43	435	255	1730	141,60
FVL-PS-150	150	6"	695	595	390	290	51	495	300	1805	170,70

Dimension D3 is adjusted depending on the valve



Valves	Makes / manufacturers
Strainer with flange connection	ARI
Strainer with flange connection	Danfoss
Strainer FTF1	Fromme
Angle seat valve with flange connection	Kemper
Strainer BOA-S	KSB
Check valve BOA-R	KSB

Specification text Aluminum surface, SVF

Energy Box, aluminum for insulation in the range up to +130 degrees Celsius of the SVF series for dirt collectors, angle seat and free-flow valves with flange connection. In accordance with the EnEV, consisting of two PUR half-shells encased in aluminum coarse grain sheet metal and fixed with straps.

ALU-SURFACE



Measurements in mm										
Art.-Nr.	DN	Inches	L1	L2	D1	D2	H	H1	Weight (g)	Price in EURO
SVF-AL-015	15	½"	245	205	140	100	195	125	470	35,00
SVF-AL-020	20	¾"	275	235	150	110	208	133	640	37,80
SVF-AL-025	25	1"	280	240	160	120	236	156	1040	39,30
SVF-AL-032	32	1 ¼"	330	280	195	145	262	164,5	1170	44,80
SVF-AL-040	40	1 ½"	345	295	205	155	298	195,5	1270	47,30
SVF-AL-050	50	2"	390	330	232	172	328	212	1290	52,70
SVF-AL-065	65	2 ½"	475	405	272	192	412	276	1370	64,50
SVF-AL-080	80	3"	495	415	300	210	465	315	1510	77,00
SVF-AL-100	100	4"	550	470	327	227	493	329,5	1690	94,40
SVF-AL-125	125	5"	615	525	359	260	560	380,5	1730	110,90
SVF-AL-150	150	6"	695	595	390	290	620	425	1805	127,20

Dimension D3 is adjusted depending on the valve

Tender specification PS surface, SVF

Energy Box, PS for insulation in the range up to +130 degrees Celsius of the series SVF for dirt collectors, angle seat and free-flow valves with flange connection. According to the EnEV consisting of two PUR half-shells, which are coated with PS foil and fixed with straps.

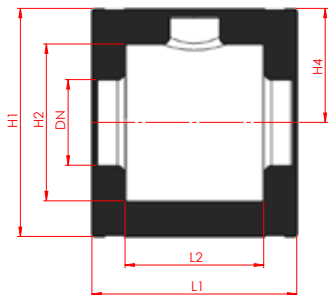
PS-SURFACE



Measurements in mm										
Art.-Nr.	DN	Inches	L1	L2	D1	D2	H	H1	Weight (g)	Price in EURO
SVF-PS-015	15	½"	245	205	140	100	195	125	470	37,70
SVF-PS-020	20	¾"	275	235	150	110	208	133	640	38,70
SVF-PS-025	25	1"	280	240	160	120	236	156	1040	41,70
SVF-PS-032	32	1 ¼"	330	280	195	145	262	164,5	1170	48,20
SVF-PS-040	40	1 ½"	345	295	205	155	298	195,5	1270	54,90
SVF-PS-050	50	2"	390	330	232	172	328	212	1290	65,70
SVF-PS-065	65	2 ½"	475	405	272	192	412	276	1370	79,90
SVF-PS-080	80	3"	495	415	300	210	465	315	1510	98,10
SVF-PS-100	100	4"	550	470	327	227	493	329,5	1690	125,60
SVF-PS-125	125	5"	615	525	359	260	560	380,5	1730	141,60
SVF-PS-150	150	6"	695	595	390	290	620	425	1805	170,70

Dimension D3 is adjusted depending on the valve

SERIE DHS AK



Valves	Makes / manufacturers
With flange connection For mostly butterfly valves KSB BOA SuperCompact valves	COMAP

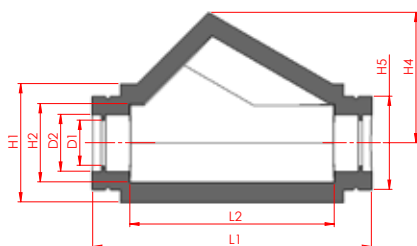
Specification text, DHS AK

DHS Energy Box without PS surface for insulation in the range up to +130 degrees Celsius of the DHS AK series for district heating valves. The cap consists of two polyurethane half-shells, which are mounted with galvanized clamps. In order to prevent water vapor diffusion, we recommend the use of a sealing paste in the temperature range of -8 °C to +12 °C.

Measurements in mm							
Art.-Nr.	Type	L1	L2	H1	H2	H4	Price in EURO
1602801	DN25	170	128	158	115	78	17,19
1602802	DN32	180	140	180	142	90	19,74
1602803	DN40	185	142	195	152	97	22,56
1602804	DN50	208	167	208	165	105	27,13
1602805	DN65	220	165	250	190	125	32,63
1602806	DN80	260	180	282	204	142	40,15
1602807	DN100	290	195	325	225	162	51,50

SERIE DHS MS

Valves	Makes / manufacturers
For angle seat valves with thread and socket connection	

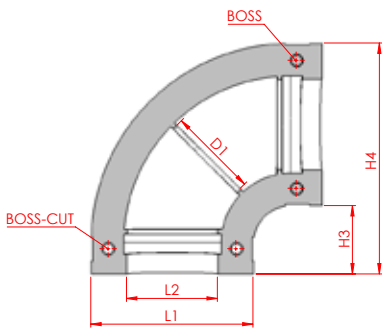


Specification text, DHS MS

DHS Energy Box without PS surface for insulation in the range up to +130 ° Celsius of the series DHS MS for district heating valves. The cap is used on tilted flanged, lift and punch valves as well as on mud flaps. The cap consists of two half shells made of polyurethane, which can be easily assembled with retaining rings. To prevent water vapor diffusion, a sealing paste must be used in the temperature range -8 °C to +12 °C.

Measurements in mm										
Art.-Nr.	Type	L1	L2	H1	H2	H4	H5	D1	D2	Price in EURO
1602701	DN25/32	210	150	83	54	92	67	34	43	9,13
1602702	DN40/50	300	220	127	84	140	100	48,5	61	11,15
1602703	DN65/80	355	258	185	121	198	148	78	90	14,91

SERIE DHS B



Valves

Makes / manufacturers

Pipe elbow pieces 50%

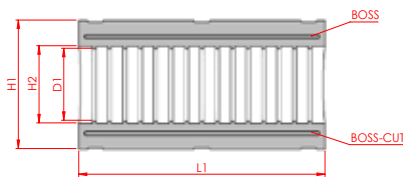
Specification text, DHS B

DHS Energy Box without PS surface for insulation in the range up to +130 degrees Celsius of the series DHS B for district heating valves. The cap consists of two pipe half-shells made of polyurethane, which can be fastened with Velcro or clips. The cap can be easily removed if necessary and then fastened again.

Measurements in mm

Art.-Nr.	Type	L1	L2	H3	H4	Price in EURO
1603101	DN15/25	50	28	25	75	5,64
1603102	DN25/32	67	43	34	100	6,45
1603103	DN40/50	100	62	42	142	8,46
1603104	DN65/80	147	92	77	224	15,44
1603105	DN100	205	115	90	295	23,90
1603106	DN125	250	142	100	350	28,20

SERIE DHS R



Valves

Makes / manufacturers

Pipe pieces 50%

Specification text, DHS R

Energy box without PS surface for insulation in the range up to + 130 ° Celsius of the series DHS R for district heating valves. Length 500 mm. The cap consists of two pipe half-shells made of polyurethane, which are easily sealed and assembled with stainless steel retaining rings. The cap can be easily removed if necessary and then fastened again. To prevent water vapor diffusion, a sealing paste must be used in the temperature range -8 ° C to + 12 ° C.

Measurements in mm

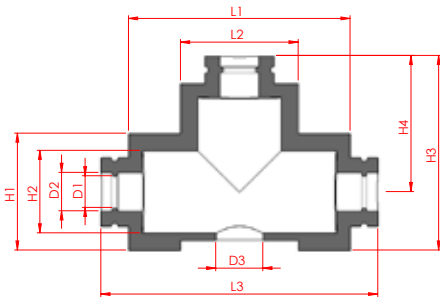
Art.-Nr.	Type	L1	H1	H2	D1	Price in EURO
1603001	DN15/20	500	50	28	22	8,46
1603002	DN25/32	500	67	43	33	10,34
1603003	DN40/50	500	100	60	48	21,75
1603004	DN65/80	500	150	90	76	24,98
1603005	DN100	500	204	124	115	31,96
1603006	DN125	500	250	150	140	45,25

SERIE DHS DM

Valves

Makes / manufacturers

For three-way valves with thread and socket connection



Specification text, DHS DM

Insulation jacket consisting of two half-shells with a spring and groove on the adjoining surfaces, which prevent slipping and are held together with electro-galvanized spring rings or bands. To prevent water vapor diffusion, sealing paste must be used at temperatures from -8°C to +12°C.



Measurements in mm

Art.-Nr.	Type	L1	L2	L3	H1	H2	H3	H4	D1	D2	D3	Price in EURO
1603401	DN15/20	160	85	200	85	60	145	102	23	28	*	10,34
1603402	DN25/32	190	117	230	112	84	170	110	36	44	*	13,70
1603403	DN40/50	220	135	279	130	100	200	135	51	61	*	13,70

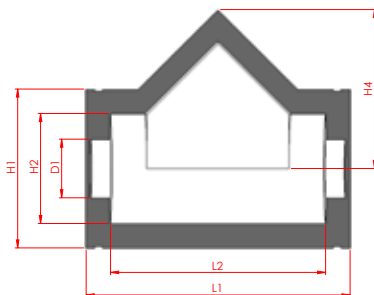
* Intended for carving

ENERGY BOX DHS F

Valves

Makes / manufacturers

For free flow valves with flanges



Specification text, DHS F

DHS Energy Box without PS surface for insulation in the range up to + 130 ° Celsius for district heating valves. The cap consists of two polyurethane half-shells, which are mounted with galvanized clamps. In order to prevent water vapor diffusion, we recommend the use of a sealing paste in the temperature range of -8 ° C to + 12 ° C.

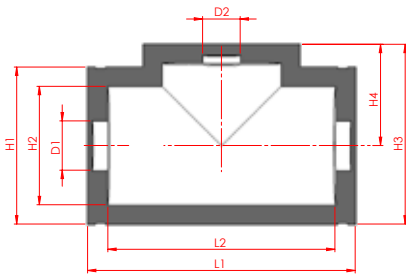


Measurements in mm

Art.-Nr.	Type	L1	L2	H1	H2	H4	D1	Price in EURO
1602901	DN20	270	240	147	102	135	*	15,85
1602902	DN25	258	218	158	116	148	*	17,19
1602903	DN32	290	250	182	142	155	*	19,74
1602904	DN40	310	270	192	152	185	*	22,56
1602905	DN50	365	315	205	167	220	*	26,99
1602906	DN65	420	355	246	187	248	*	32,50
1602907	DN80	467	389	285	202	272	*	40,15
1602908	DN100	540	440	325	225	325	*	51,16
1602909	DN125	585	485	353	270	367	*	64,83

* Intended for carving

SERIE DHS FL



Valves Makes / manufacturers

For flange connection

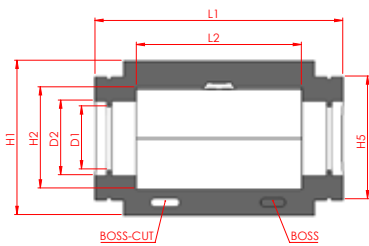
Specification text, DHS FL

Energy box without PS surface for insulation in the range up to + 130 ° Celsius of the series DHS FL for district heating valves. The cap consists of two polyurethane half-shells, which are mounted with galvanized clamps. In order to prevent water vapor diffusion, we recommend the use of a sealing paste in the temperature range of -8 ° C to + 12 ° C.

Measurements in mm										
Art.-Nr.	Type	L1	L2	H1	H2	H3	H4	D1	D2	Pris i DKK
1603201	DN20	255	220	137	105	152	83	*	*	23,63
1603202	DN25	262	220	161	120	180	100	*	*	25,65
1603203	DN32	290	250	182	142	203	111	*	*	29,27
1603204	DN40	312	272	193	152	225	127	*	*	33,84
1603205	DN50	370	320	205	165	243	138	*	*	40,42
1603206	DN65	423	355	248	187	284	160	*	*	48,61
1603207	DN100	540	440	327	225	375	207	*	*	73,18

* Intended for carving

SERIE DHS KH



Valves Makes / manufacturers

For valves with threaded or socket connection

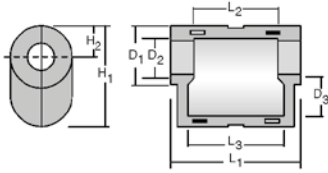
Specification text, DHS KH

Energy Box without PS surface for insulation in the range up to + 130 ° Celsius of the series DHS KH for district heating valves.

The cap consists of two half shells with tongue and groove on the abutting surfaces that prevent slipping. They are fastened with electrogalvanized galvanized spring rings or clamps. In order to prevent water vapor diffusion, a sealing paste must be used in the temperature range -8 ° C to + 12 ° C.

Measurements in mm									
Art.-Nr.	Type	L1	L2	H1	H2	H5	D1	D2	Price in EURO
1603301	DN15/20	125	68	70	44	51,5	26	30	7,12
1603302	DN25/32	156	97	85	60	65	33	43	9,13
1603303	DN40/50	218	132	124	88	100	48	60	11,15
1603304	DN65/80	300	200	188	120	147	77	90	14,91

SERIE MS



Valves / Makes / manufacturers

For all common strainers with threaded connection

Type MS

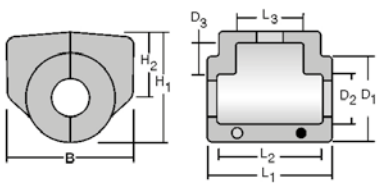
TOPO MS for insulation in the range up to + 130 ° Celsius for mud flaps with sleeves. According to the EnEV consisting of two PUR half-shells, which are coated with PS foil and fixed with straps.



Measurements in mm

Art.-Nr.	Type	L1	L2	L3	D1	D2	D3	H1	H2	Price in EURO
1501601	MS 15/20	140	95	108	70	40	48	117	35	20,13
1501602	MS 25	162	111	127	85	57	62	138	43	22,82
1501603	MS 32/40	222	155	185	117	75	95	207	62	28,19
1501604	MS 50	260	188	244	140	93	113	242	72	30,87

SERIE ME



Valves / Makes / manufacturers

For diaphragm valves

Saunders

Sisto

Type ME

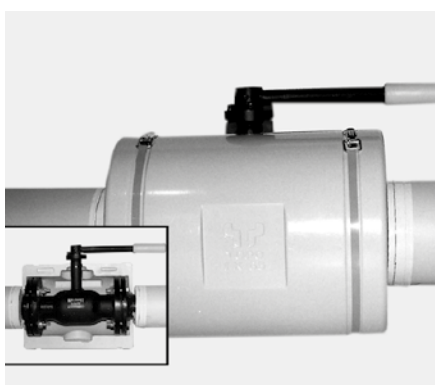
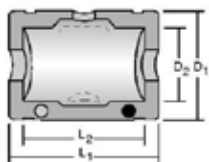
TOPO ME for insulation in the range up to + 130 ° Celsius for diaphragm valves with sleeves. According to the EnEV consisting of two PUR half-shells, which are coated with PS foil and fixed with straps.



Measurements in mm

Art.-Nr.	Type	B	L1	L2	L3	D1	D2	D3	H1	H2	Price in EURO
1501701	ME 15/20	126	125	94	64	90	47	33	102	59	20,13
1501702	ME 25	140	136	111	75	98	59	34	123	75	22,82
1501703	ME 32	155	156	135	87	118	63	47	150	92	25,50
1501704	ME 40	172	175	149	100	145	85	55	182	110	28,19
1501705	ME 50	212	205	177	117	155	95	45	193	115	30,87

SERIE FK



Valves	Makes / manufacturers
--------	-----------------------

For diaphragm valves, ball valves, valves with grease, with flanges

Type FK

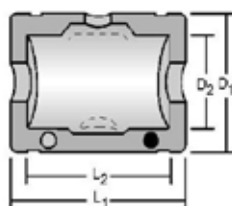
TOPO FK for insulation in the range up to + 130° degrees Celsius for ball valves, diaphragm valves and relubricated taps.

According to the EnEV consisting of two PUR half-shells, which are coated with PS foil and fixed with straps.

Measurements in mm

Art.-Nr.	Type	L1	L2	D1	D2	Price in EURO
1501101	FK 15	212	180	148	98	30,87
1501102	FK 20/25	250	200	165	120	41,61
1501103	FK32	260	230	200	145	46,98
1501104	FK 40	290	265	230	155	51,01
1501105	FK 50	340	290	250	170	53,03
1501106	FK 65	340	290	270	190	57,72
1501106-l	FK 65-l	440	390	270	190	60,40
1501107	FK 80	400	350	290	205	60,40
1501108	FK 100	445	380	330	230	67,11
1501109	FK 125	510	480	350	258	73,83

SERIE K



Valves	Makes / manufacturers
--------	-----------------------

Ball valve with welding ends

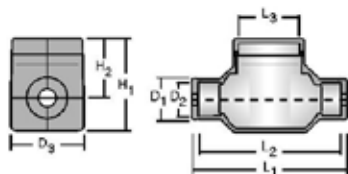
Type K

TOPO K for insulation in the range up to + 130° degrees Celsius for ball valves with sockets and welding connection. According to the EnEV consisting of two PUR half-shells, which are coated with PS foil and fixed with straps.

Measurements in mm

Art.-Nr.	Type	L1	L2	D1	D2	Price in EURO
1502401	K 25/50	200	140	145	93	22,82
1502402	K 65	230	170	200	115	36,24
1502403	K 80	230	167	220	135	41,61
1502404	K 100	315	245	245	162	46,98
1502405	K 125	320	245	270	190	73,83
1502406	K 150	440	360	308	225	80,54

SERIE T



Valves	Makes / manufacturers
--------	-----------------------

Caps for heat and water meters

Type T

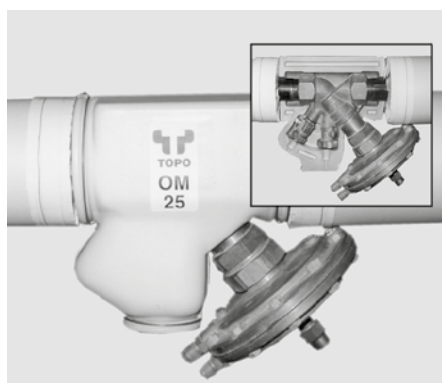
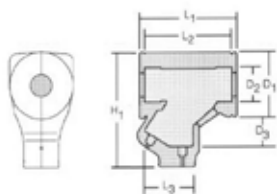
TOPO T for insulation in the range up to + 130° degrees Celsius for water and heat meters.

According to the EnEV consisting of two PUR half-shells, which are coated with PS foil and fixed with straps.

Maße in mm

Art.-Nr.	Type	L1	L2	L3	D1	D2	D3	H1	H2	Price in EURO
1502705	T 190	225	207	90	70	45	124	154	100	26,85
1502706	T 220	260	238	90	70	45	124	154	100	29,53

SERIE OM



Valves	Makes / manufacturers
--------	-----------------------

Line regulating valves STAD
Threaded line regulating valves
BOA-control valve -Control SAR

TA Heimeier
Danfoss
KSB
Oventrop

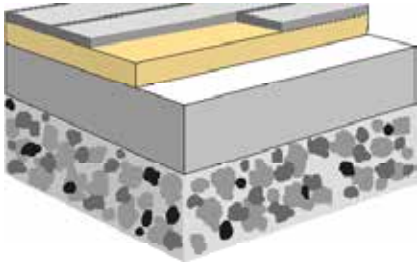
Type OM

TOPO OM for insulation in the range up to + 130° degrees Celsius.

According to the EnEV consisting of two PUR half-shells, which are coated with PS foil and fixed with straps.

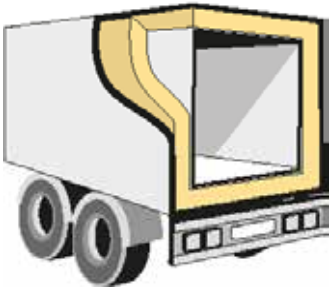
Measurements in mm

Art.-Nr.	Type	L1	L2	L3	D1	D2	D3	H1	Price in EURO
1502902	OM 20	132	115	80	75	45	40	155	20,13
1502903	OM 25	155	140	80	100	53	40	175	22,82
1502904	OM 32	165	140	80	110	60	40	195	25,50
1502905	OM 40	178	150	80	128	65	40	212	28,19
1502906	OM 50	210	185	80	162	83	40	247	30,87



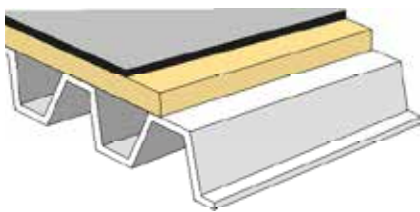
INSULATING FLOORS AND CEILINGS

Tinby Skumplast supplies PUR and PIR for insulating and retro-fitting insulation in floors and ceilings. PUR/PIR provides complete coverage of the floor area so that no cold bridging can occur. Pouring is done directly onto the concrete without using shutters. The finished flooring, such as particle board or parquet flooring, can be laid directly on top of the insulation panels.



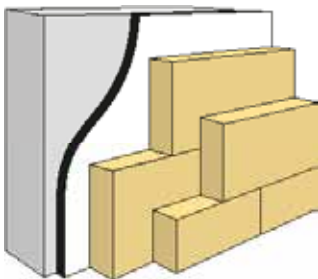
INSULATING IN THE REFRIGERATION SECTOR

We manufacture insulation panels in PUR and PIR for refrigeration vehicles, containers, transport units, portable office structures, and trailers. Insulation sheets in PUR/PIR can be affixed directly onto metal or fibreglass panels (sandwich construction).



INSULATING ROOFS

PUR and PIR are excellent materials for insulating and retro-fitting insulation in roofs in storage facilities and industrial premises. Tinby Skumplast supplies foam panels which can be laid either directly on top of steel plates or directly on top of existing roofing felt, and new asphalt roofing can also be laid on top of insulating foam sheets.



INSULATING WALLS AND CEILINGS

PUR and PIR can be used to insulate and retro-fit insulation in walls, façades and windows in buildings, in gas concrete or in solid walls. The foam panels provide a good base for the final wall coverings, and can be used for external doors as well as façade sections.

COMPRESSIVE STRENGTHS

Density	35 kg/m ³	40 kg/m ³
On surfaces	2.3 kg/cm ²	2.9 kg/cm ²
On the sides	1.5 kg/cm ²	2.0 kg/cm ²

Higher densities can be manufactured to order



Østre Industrivej 2 | DK-6731 Tjæreborg
Ph. +45 7517 6060 | skum@tinby.dk | tinbyskumplast.dk

POLYURETHANE/ POLYISOCYANURATE

PUR insulation comprises a group of insulating materials which are based on polyurethane (PUR) or polyisocyanurate (PIR). The closed-cell structure and high crosslink density of these insulating materials give them their excellent insulating properties, efficient heat resistance and high compressive strength.

Insulating with PUR and PIR can help improve the energy efficiency of buildings and reduce CO₂ emissions. PUR is one of the most effective insulation materials available, and can deliver a very high level of thermal efficiency using a minimum of insulating thickness.

With lambda (thermal conductivity) values as low as 0.024 W/m*K, an insulation effect (expressed in U-values) that equals that attained using other insulating materials can be achieved, even though significantly thinner layers of PUR are used.

PUR insulating materials are used:

- In roof construction
- In external wall construction
- In new buildings
- For renovations
- For retro-fitting of insulation
- In subfloors and baseboards
- For insulating refrigerated vehicles
- For insulating temporary portable office structures

We do everything in our power to be the strong partner our clients need - one who is at the forefront of technological developments within our core competencies. Our aim, as a supplier, is to offer our clients total flexibility.

PRICE LIST TOPO DHS INSULATION CAPS FOR DISTRICT HEATING VALVES

Typ	AK	B	R	DM	F	FL	KH
Steinlese							
DN 10							
DN 15		B DN15 5,64	R DN15 8,46	DM DN15 10,34			KH DN15 7,12
DN 20		B DN20 5,64	R DN20 8,46	DM DN20 10,34	F DN20 15,85	FL DN20 23,63	KH DN20 7,12
DN 25	AK DN25 17,19	B DN25 6,64	R DN25 10,34	DM DN25 13,70	F DN25 17,19	FL DN25 25,65	KH DN25 9,13
DN 32	AK DN32 19,74	B DN32 6,45	R DN32 10,34	DM DN32 13,70	F DN32 19,74	FL DN32 29,27	KH DN32 9,13
DN 40	AK DN40 22,56	B DN40 8,46	R DN40 21,75	DM DN40 13,70	F DN40 22,56	FL DN40 33,48	KH DN40 11,15
DN 50	AK DN50 27,13	B DN50 8,46	R DN50 21,75	DM DN50 13,70	F DN50 26,99	FL DN50 40,42	KH DN50 11,15
DN 65	AK DN65 32,63	B DN65 15,44	R DN65 24,98		F DN65 32,50	FL DN65 48,61	KH DN 65 14,91
DN 80	AK DN80 40,15	B DN80 15,44	R DN80 24,98		F DN80 40,15		KH DN80 14,91
DN 100	AK DN100 51,15	B DN100 23,90	R DN100 31,96		F DN100 51,16	FL DN100 73,18	
DN 125		B DN125 28,20	R DN125 45,25		F DN125 64,83		
DN 150							

PRICE LIST TOPO ENERGY BOX INSULATION CAPS

Typ	MS	ME	FK	K	T	OM
Størrelse	"til snavsamlere med muffe"	"til membranventiler med muffe"	"til Flange-, kugle og membranventiler"	"til kugleventiler med muffe"	"Vand- og varmemålere"	"til strengreguleringsventiler"
DN 10						
DN 15	MS-015 20,13	ME-015 20,13	FK-015 30,87			
DN 20	MS-020 20,13	ME-020 20,13	FK-020 41,61			OM-020 20,13
DN 25	MS-025 22,82	ME-025 22,82	FK-025 41,16	K-025 22,82		OM-025 22,82
DN 32	MS-032 28,19	ME-032 25,50	FK-032 46,98	K-032 22,82		OM-032 25,50
DN 40	MS-040 28,19	ME-040 28,19	FK-040 51,01	K-040 22,82		OM-040 28,19
DN 50	MS-050 30,87	ME-050 30,87	FK-050 55,03	K-050 22,82		OM-050 30,87
DN 65			FK-065 57,72	K-065 36,24		
DN 80			FK-080 60,40	K-080 41,61		
DN 100			FK-100 67,11	K-100 46,98		
DN 125			FK-125 73,83	K-125 73,83		
DN 150				K-150 80,54		
					T190 26,85	
					T220 29,53	

PRICE LIST TOPO ENERGY BOX, ALU

Please indicate an exact fitting type with each order

		Muffe										Flange									
Type	KHM	PKH	GVM	SVK	SVM	SFM	OMG	HCM	HSG	DWM	FPA	FKL	BSC	FVK	FVL	SVF	DWW				
Størrelse	"til kuglehane med muffetilutspindel"	"til pumpe-kuglehane"	"til skydere, sædeventil og kontraktklapper med muffetilutspindel"	"til fristromsventil MNG-Kombi II og III"	"til ventiler med skrã spindel og kontraven-tiler med muffetilutspindel"	"til smudsfilter i muffeduf-ferse"	"til Oventrop Hydrocontrol Oventrop "Aquastrøm" KFR og MNG ALWA KFR"	"til TA-strengu-lerings-ventiler STS, STAD, STAM, STAP"	"til Heimeler Vario & Kemper MultiTherm"	"til 3-vejsventi-ler med muffetilutspindel"	"til flangepar og blindflan-ger"	"til butterflyven-tiler, klapkontra-ventiler og kompensatorer"	"til KSB-Boa Super Compact"	"til korte kugle-, membrã-, sæde- og flangeven-tiler iht. DIN-længde F4"	"til lange kugle-, membrã-, sæde- og flangeven-tiler iht. DIN-længde F1"	"til smudsfilter og fristromsven-tiler med flangehilutspindel"	"til trevejsventil med flangehilutspindel"				
DN 10	KHM-AL-010 16,60		GVM-AL-010 20,70	SVK-AL-010 20,70	SVM-AL-010 20,70	SFM-AL-010 21,30	OMG-AL-010 22,10	HCM-AL-010 22,10	HSG-AL-010 23,70	DWM-AL-010 23,70	FPA-AL-010 32,90	FKL-AL-015 33,30	BSC-AL-015 33,70	FVK-AL-015 35,90	FVL-AL-015 35,00	SVF-AL-015 35,00	DWW-AL-015 37,60				
DN 15	KHM-AL-015 17,90		GVM-AL-015 21,30	SVK-AL-015 21,30	SVM-AL-015 21,30	SFM-AL-015 21,60	OMG-AL-015 22,80	HCM-AL-015 22,80	HSG-AL-015 23,90	DWM-AL-015 23,90	FPA-AL-015 32,90	FKL-AL-015 33,30	BSC-AL-015 33,70	FVK-AL-015 35,90	FVL-AL-015 35,00	SVF-AL-015 35,00	DWW-AL-015 37,60				
DN 20	KHM-AL-020 18,60	PKH-AL-025 18,60	GVM-AL-020 21,60	SVK-AL-020 21,60	SVM-AL-020 21,60	SFM-AL-020 22,10	OMG-AL-020 23,20	HCM-AL-020 23,20	HSG-AL-020 24,20	DWM-AL-020 24,20	FPA-AL-020 33,00	FKL-AL-020 34,50	BSC-AL-020 35,90	FVK-AL-020 38,70	FVL-AL-020 37,80	SVF-AL-020 37,80	DWW-AL-020 39,00				
DN 25	KHM-AL-025 20,30	PKH-AL-031 20,30	GVM-AL-025 24,60	SVK-AL-025 24,60	SVM-AL-025 24,60	SFM-AL-025 25,30	OMG-AL-025 26,40	HCM-AL-025 26,40	HSG-AL-025 26,90	DWM-AL-025 26,90	FPA-AL-025 33,50	FKL-AL-025 37,00	BSC-AL-025 37,20	FVK-AL-025 41,10	FVL-AL-025 39,30	SVF-AL-025 39,30	DWW-AL-025 40,80				
DN 32	KHM-AL-032 24,50	PKH-AL-032 24,50	GVM-AL-032 26,90	SVK-AL-032 26,90	SVM-AL-032 26,90	SFM-AL-032 27,20	OMG-AL-032 28,70	HCM-AL-032 28,70	HSG-AL-032 29,30	DWM-AL-032 29,30	FPA-AL-032 34,50	FKL-AL-032 39,70	BSC-AL-032 40,00	FVK-AL-032 44,90	FVL-AL-032 44,80	SVF-AL-032 44,80	DWW-AL-032 46,20				
DN 40	KHM-AL-040 28,70		GVM-AL-040 29,20	SVK-AL-040 29,20	SVM-AL-040 29,20	SFM-AL-040 29,40	OMG-AL-040 31,40	HCM-AL-040 31,40	HSG-AL-040 30,80	DWM-AL-040 30,80	FPA-AL-040 37,60	FKL-AL-040 41,90	BSC-AL-040 42,10	FVK-AL-040 48,40	FVL-AL-040 47,30	SVF-AL-040 47,30	DWW-AL-040 48,90				
DN 50	KHM-AL-050 32,60		GVM-AL-050 33,30	SVK-AL-050 33,30	SVM-AL-050 33,30	SFM-AL-050 34,80	OMG-AL-050 35,40	HCM-AL-050 35,40	HSG-AL-050 35,40	DWM-AL-050 35,40	FPA-AL-050 39,40	FKL-AL-050 44,70	BSC-AL-050 45,00	FVK-AL-050 53,80	FVL-AL-050 52,70	SVF-AL-050 52,70	DWW-AL-050 54,90				
DN 65	KHM-AL-065 38,00		GVM-AL-065 39,60	SVK-AL-065 39,30	SVM-AL-065 39,30	SFM-AL-065 40,50	OMG-AL-065 42,90	HCM-AL-065 42,90	HSG-AL-065 42,90		FPA-AL-065 50,20	FKL-AL-065 49,70	BSC-AL-065 50,80	FVK-AL-065 66,20	FVL-AL-065 64,50	SVF-AL-065 64,50	DWW-AL-065 68,20				
DN 80											FPA-AL-080 57,40	FKL-AL-080 60,40	BSC-AL-080 61,40	FVK-AL-080 78,80	FVL-AL-080 77,00	SVF-AL-080 77,00	DWW-AL-080 81,60				
DN 100											FPA-AL-100 63,20	FKL-AL-100 71,60	BSC-AL-100 73,60	FVK-AL-100 93,20	FVL-AL-100 94,40	SVF-AL-100 94,40	DWW-AL-100 101,00				
DN 125											FPA-AL-125 71,30	FKL-AL-125 81,90	BSC-AL-125 87,00	FVK-AL-125 111,30	FVL-AL-125 110,90	SVF-AL-125 110,90	DWW-AL-125 121,70				
DN 150											FPA-AL-150 80,00	FKL-AL-150 86,80	BSC-AL-150 94,60	FVK-AL-150 112,40	FVL-AL-150 127,20	SVF-AL-150 127,20	DWW-AL-150 140,10				

PRISLISTE TOPO ENERGY BOX, PS

Enter an exact fixture type with each order.

Muffe													Flange							
Type	KHM	PKH	GVM	SVK	SVM	SFM	OMG	HCM	HSG	DWM	USV	UKM	FPA	FKL	BSC	FVK	FVL	SVF	DWW	
	"til kuglehænder med muffetilslutning og kort spindel"	"til pumpe-kuglehænder"	"til skydere, sædeventil og kontraklapper med muffedluge og kort muffetilslutning"	"til fristrømsventil MING - Kombi II og III"	"til ventiler med skrå spindel og kontraventiler med muffetilslutning"	"til smudsfiltere i muffeudførelse"	Oventrop Hydrocontrol Oventrop "Aquastrøm" KFR og MING ALWA KFR	"til TA-strenguløvsventiler STS, STAD, STAM, STAP"	"til Heimeier Vario & Kemper MultiTherm"	"til 3-vejsventiler med muffetilslutning"	alle almindelige fristrømsventiler	alle almindelige kuglehænder med muffetilslutning	"til flangepar og blindflanger"	"til butterflyventiler, klappkontra-ventiler og kompensatorer"	"til KSB-Boa Super Compact"	"til korte kugle-, membran-, sæde- og flangeventiler iht. DIN-længde F4"	"til lange kugle-, membran-, sæde- og flangeventiler iht. DIN-længde F1"	"til smudsfiltere og fristrømsventiler med flangetilslutning"	"til trævejsventil med flangetilslutning"	
DN 10	KHM-PS-010 11,60		GVM-PS-010 16,40	SVK-PS-010 16,40	SVM-PS-010 16,40	SFM-PS-010 16,40	OMG-PS-010 18,30	HCM-PS-010 18,30	HSG-PS-010 19,20	DWM-PS-010 19,20	USV-PS-010 18,30	UKM-PS-010 16,40								
DN 15	KHM-PS-015 11,90		GVM-PS-015 16,70	SVK-PS-015 16,70	SVM-PS-015 16,70	SFM-PS-015 16,70	OMG-PS-015 19,00	HCM-PS-015 19,00	HSG-PS-015 19,20	DWM-PS-015 19,20	USV-PS-015 19,00	UKM-PS-015 16,70	FPA-PS-015 26,80	FKL-PS-015 27,30	BSC-PS-015 35,30	FVK-PS-015 35,10	FVL-PS-015 37,70	SVF-PS-015 37,70	DWM-PS-015 57,30	
DN 20	KHM-PS-020 12,50	PKH-PS-025 12,50	GVM-PS-020 17,50	SVK-PS-020 17,50	SVM-PS-020 17,50	SFM-PS-020 17,50	OMG-PS-020 19,00	HCM-PS-020 19,00	HSG-PS-020 19,20	DWM-PS-020 19,20	USV-PS-020 19,00	UKM-PS-020 17,50	FPA-PS-020 26,90	FKL-PS-020 27,80	BSC-PS-020 36,70	FVK-PS-020 35,30	FVL-PS-020 38,70	SVF-PS-020 38,70	DWM-PS-020 58,50	
DN 25	KHM-PS-025 14,10	PKH-PS-031 14,10	GVM-PS-025 19,80	SVK-PS-025 19,80	SVM-PS-025 19,80	SFM-PS-025 19,80	OMG-PS-025 21,80	HCM-PS-025 21,80	HSG-PS-025 21,90	DWM-PS-025 21,90	USV-PS-025 21,80	UKM-PS-025 19,80	FPA-PS-025 27,30	FKL-PS-025 31,30	BSC-PS-025 37,70	FVK-PS-025 37,10	FVL-PS-025 41,70	SVF-PS-025 41,70	DWM-PS-025 62,20	
DN 32	KHM-PS-032 17,00	PKH-PS-032 16,90	GVM-PS-032 21,60	SVK-PS-032 21,60	SVM-PS-032 21,60	SFM-PS-032 21,60	OMG-PS-032 23,30	HCM-PS-032 23,30	HSG-PS-032 23,70	DWM-PS-032 23,70	USV-PS-032 23,30	UKM-PS-032 21,60	FPA-PS-032 28,50	FKL-PS-032 35,30	BSC-PS-032 44,60	FVK-PS-032 42,40	FVL-PS-032 48,20	SVF-PS-032 48,20	DWM-PS-032 70,70	
DN 40	KHM-PS-040 20,40		GVM-PS-040 24,30	SVK-PS-040 24,30	SVM-PS-040 24,30	SFM-PS-040 24,30	OMG-PS-040 25,30	HCM-PS-040 25,30	HSG-PS-040 26,70	DWM-PS-040 26,70	USV-PS-040 25,30	UKM-PS-040 24,30	FPA-PS-040 31,30	FKL-PS-040 42,00	BSC-PS-040 49,00	FVK-PS-040 48,00	FVL-PS-040 54,90	SVF-PS-040 54,90	DWM-PS-040 80,30	
DN 50	KHM-PS-050 24,50		GVM-PS-050 27,30	SVK-PS-050 27,30	SVM-PS-050 27,30	SFM-PS-050 27,30	OMG-PS-050 27,80	HCM-PS-050 27,80	HSG-PS-050 29,70	DWM-PS-050 29,70	USV-PS-050 27,80	UKM-PS-050 27,30	FPA-PS-050 34,20	FKL-PS-050 45,70	BSC-PS-050 54,70	FVK-PS-050 53,80	FVL-PS-050 65,70	SVF-PS-050 65,70	DWM-PS-050 94,60	
DN 65	KHM-PS-065 29,10		GVM-PS-065 33,30	SVK-PS-065 33,30	SVM-PS-065 33,30	SFM-PS-065 33,30	OMG-PS-065 36,90	HCM-PS-065 36,90					FPA-PS-065 42,30	FKL-PS-065 51,40	BSC-PS-065 64,20	FVK-PS-065 62,00	FVL-PS-065 79,90	SVF-PS-065 79,90	DWM-PS-065 112,90	
DN 80													FPA-PS-080 48,40	FKL-PS-080 59,70	BSC-PS-080 74,70	FVK-PS-080 73,50	FVL-PS-080 98,10	SVF-PS-080 98,10	DWM-PS-080 138,40	
DN 100													FPA-PS-100 53,50	FKL-PS-100 66,10	BSC-PS-100 85,40	FVK-PS-100 85,00	FVL-PS-100 125,60	SVF-PS-100 125,60	DWM-PS-100 174,70	
DN 125													FPA-PS-125 60,00	FKL-PS-125 79,60	BSC-PS-125 97,00	FVK-PS-125 96,50	FVL-PS-125 141,50	SVF-PS-125 141,50	DWM-PS-125 204,10	
DN 150													FPA-PS-150 67,50	FKL-PS-150 96,30	BSC-PS-150 106,20	FVK-PS-150 109,80	FVL-PS-150 170,70	SVF-PS-150 170,00	DWM-PS-150 216,80	

CONTACT PERSONS



Erik Kaag
Sales and Marketing Manager

eka@tinby.dk
Ph. +45 4233 0187

TECHNICAL SUPPORT



Jytte Simonsen
Logistical Coordinator

js@tinby.dk
Ph. +45 6489 1440

Tinby A/S | Snavevej 6-10 | DK-5471 Søndersø

tinby@tinby.dk
Ph. +45 6489 1440
www.tinby.dk

CONDITIONS OF SALE AND TERMS OF DELIVERY FOR PLASTIC COMPONENTS

1. Terms of Delivery

Delivery shall be made in accordance with Incoterms 2000 EXW (Ex Works)

2. Terms of payment

Payment shall be made in Danish kroner, unless otherwise agreed in writing.

If payment is not made when due, interest shall be charged at 1% per month or part thereof.

3. Property reservation and retention right

TINBY shall retain property in the delivered products, until the full purchase sum with interest, costs, etc., has been paid. TINBY may retain tools, until all outstanding amounts have been paid.

4. Complaints

All and any risks related to the goods shall pass to the Buyer at the time of delivery of the goods. Any complaints regarding the goods shall be made in writing to TINBY as soon as possible, but not later than eight days after delivery. If TINBY has not received the complaint within the stated deadline, the Buyer's right to object to quantity and quality shall be lost.

TINBY shall be entitled and obliged to remedy all deficiencies. TINBY itself shall decide whether such remedial action shall take the form of repair or replacement of the defective part/s, or a replacement delivery.

TINBY's liability shall only cover deficiencies which appear within twelve months of the date of delivery.

Other than as mentioned above, TINBY shall not be liable for deficiencies. This concerns any loss which the deficiency may cause, including operating loss, loss of profit or other financial, consequential losses.

5. Warranties

If TINBY has undertaken to offer a warranty, this warranty shall cover defects and deficiencies in materials and manufacture. A warranty offered by TINBY does not cover defects and deficiencies caused by inadequate maintenance, incorrect installation, changes made by the Buyer or incorrect use of the product.

Furthermore, the warranty does not cover normal wear and normal deterioration. TINBY's warranty obligation requires that the Buyer is able to document that any ascertained defect or deficiency has not been caused by the elements exempted from the warranty, cf. above.

The Buyer shall notify TINBY in writing of any defects or deficiencies in the products sold not later than eight days after the defect or deficiency was or should have been discovered by the Buyer. If the Buyer does not notify TINBY by this deadline and before the expiry of the warranty period, the Buyer shall lose his right to advance any claims in relation to such defect or deficiency.

TINBY shall be entitled and obliged to remedy all deficiencies covered by a warranty issued by TINBY. It is up to TINBY itself to decide whether such remedial action shall take the form of repair or replacement of the defective part/s, all on the terms stated under item 4.

TINBY shall have no other liability in connection with such deficiencies. This applies to any loss caused by the deficiency, including operating loss, loss of profit or any other financial, consequential losses.

6. Product liability

The Buyer shall indemnify TINBY to the extent TINBY is held liable towards a third party for such damage and such loss for which TINBY is not liable towards the Buyer in accordance with this item.

TINBY shall not be liable for damage caused by the products sold:

a) on real property or chattels, where such damage occurs while the equipment is in the Buyer's possession.

b) on products manufactured by the Buyer or products in which such products form part, or for damage to real property or chattels caused by such products as a result of the products sold.

In no case shall TINBY be liable for operating loss, loss of profit or any other financial, consequential losses.

If a third party advances a claim against either party for damages in accordance with this item, the party against which the claim is advanced shall immediately inform the other party. TINBY and the Buyer shall be mutually obliged to let themselves be sued before the court or arbitration tribunal, which deals with the compensation claim advanced against either of them on the basis of damage or loss claimed to be caused by the equipment. However, disputes between the Buyer and TINBY shall always be decided before the agreed venue in accordance with these Conditions of Sale and Terms of Delivery.

7. Delays

If a delay occurs, the Buyer shall be informed accordingly. In case of a delay, the Buyer shall not acquire any other rights than to be able to cancel the agreement. The Buyer may only cancel the agreement if the delay is significant to the Buyer and the delay can be attributed to TINBY. In such case, the Buyer shall – after delivery was to have been made – forward a written request to TINBY that delivery be made within three weeks. If delivery is not made within the three-week deadline, the Buyer may cancel the purchase.

8. Insurance, storage and maintenance of tools

The Buyer shall be obliged to take out insurance covering tools stored by TINBY. Such insurance shall cover fire, theft, wilful and fortuitous destruction.

If the tools are stored by TINBY, TINBY shall store the Buyer's tools safely and maintain them.

If tools are stored, but not used, the Buyer shall pay DKK 3,000 per year storage rent. Tools which have not been used for three years may be returned by TINBY for the Buyer's account.

9. Disclaimer and force majeure

The following circumstances shall release TINBY from any liability, provided such circumstances occur after the agreement was made, and these circumstances shall also release TINBY from any duty to execute the agreement:

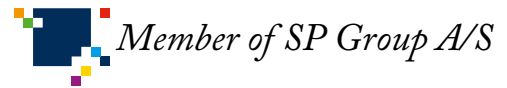
Strike, lock-out, business interruption, delayed delivery from subcontractors and similar cases which delay the time of delivery correspondingly. War, civil unrest, Acts of God and similar circumstances beyond the parties' control, including shortage of goods, seizure, currency restrictions or authority intervention shall entitle TINBY to fully or partially cancel any offer made or any standing order. The party claiming force majeure shall be obliged to inform the other party by express letter / fax / e-mail within 14 days of such a force majeure situation occurring.

10. Disputes

All and any disputes between the parties shall be decided in accordance with Danish law. Attempts shall always be made to settle disputes amicably. If a dispute cannot be settled amicably, such dispute shall be decided by the Danish Institute of Arbitration in Copenhagen. However, TINBY may choose to file a lawsuit with the ordinary courts of law.

TINBY A/S

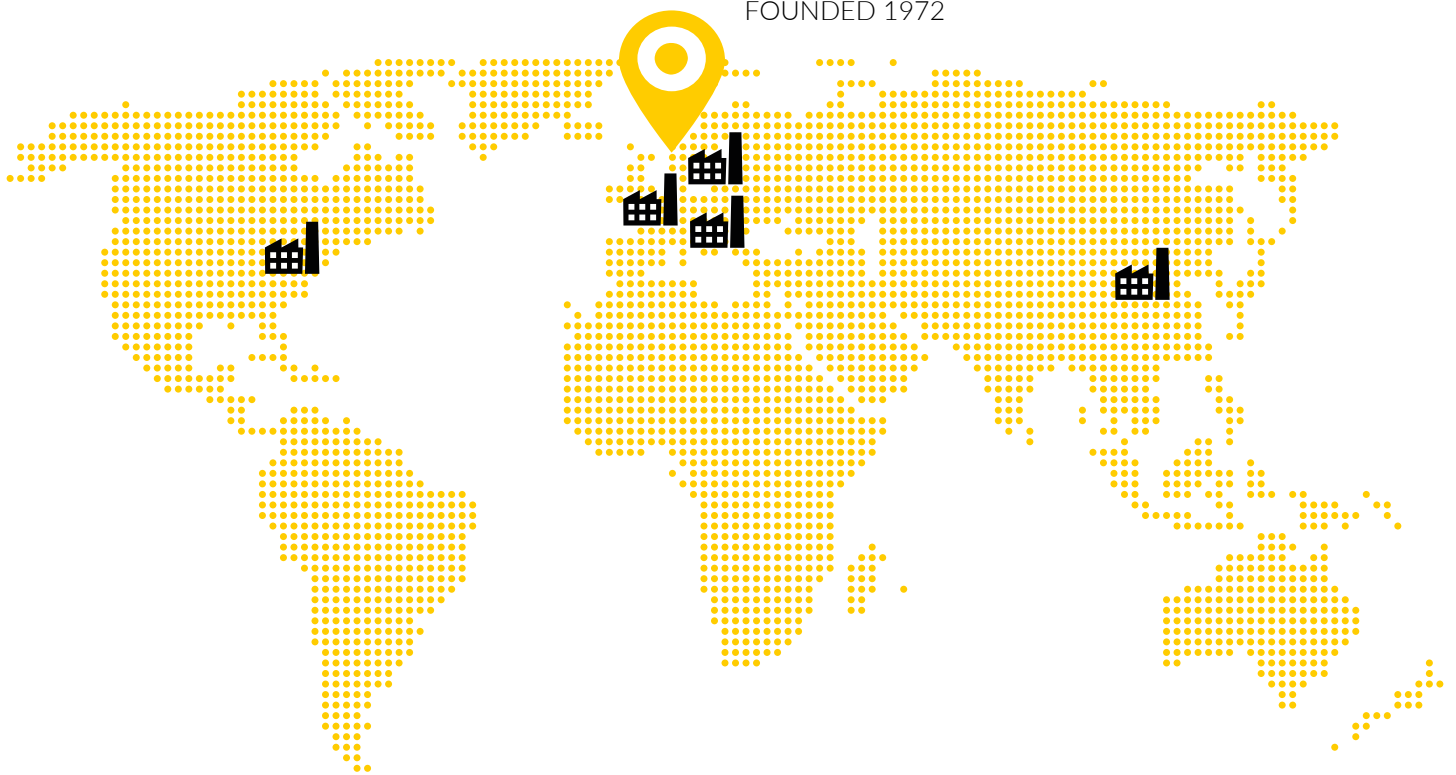
- A PART OF SP GROUP



Tinby A/S was founded in 1972 and is today Scandinavia's leading supplier of polyurethane solutions. Our blanks, made from flexible, solid, or foamed polyurethane, are used in furniture, instruments, window insulation, and wind turbines, among other applications. As a comprehensive supplier, we develop highly specialised plastics to meet diverse product requirements. Additionally, we offer a wide range of technologies and techniques for refining the material.

SP GROUP A/S

MAIN OFFICE IN DENMARK,
FOUNDED 1972



Sales and marketing in

97
COUNTRIES



An average of

2.336
EMPLOYEES



Production in

12
COUNTRIES



Snavevej 6-10 | DK-5471 Sønderlø
tinby@tinby.dk | www.tinby.dk
Ph. +45 64 89 14 40